

AnalytixTM Manual

Saltire Software
PO Box 230755
Tigard, OR 97281 0755

Table of Contents

Need Help?	7
Linked Text.....	7
Menu Index	7
File	8
New	9
Open	9
Save	10
Save As	10
Print	10
DXF Out	11
DXF In	11
Edit.....	12
Undo	13
Redo	13
Select	14
Select All	14
Cut	15
Copy	15
Paste	15
Delete	16
Import Link	16
Export Link	17
Edit Links	17
Erase Background	18
Group Selected Lines/Arcs	18
Ungroup Selected Lines/Arcs	19
Sketch.....	19
Point	20

Line	20
Fillet	20
Arc	20
Circle	21
Construction Line	21
Annotation	21
Dimension.....	23
Line Length	24
Parallel Distance	24
Line to Point	24
Point to Point	25
Angle	25
Radius	26
Tangent	26
Point on Line	26
Point on Circle	26
Automatic	26
Constrain.....	27
Same Line	27
Same Point	28
Fix Point / Line	28
Horizontal	29
Vertical	29
View.....	30
Move	30
Rotate	31
Zoom Box	31
Zoom Min / Max	32
Zoom Out	32
Blank	32

Unblank All	32
Change Level	32
Blank / Unblank Level	32
Defaults.....	33
Default Pens	33
Pick Aperture	35
System Defaults	35
Default Units	36
Bar Properties	37
Max / Min Tolerance	37
Statistical Tolerance	38
Default Tolerance	38
Dynamics Defaults	39
Tools.....	40
Animate	41
Increment	41
Trace	42
Envelope	42
Calculator	42
Univariate Iteration	49
Multivariate Iteration	50
Graph	53
Table	53
Toolbox	54
Attributes.....	54
Info	55
Measure	58
Pen	59
Font	59
Analysis.....	59

Add Load	60
Add Actuator	61
Add Stops	62
Edit Stops	63
Resultant Force / Torque	63
Stress	64
Shear / Bending Moment	64
Force on Pin	65
Derive Accelerations	65
Dynamic Simulation	65
New Simulation	68
Edit Simulation	69
Tolerance Zone	69
Tolerance Trace	71
Toolbar Help.....	71
Index.....	73

Need Help?

There are many ways to get help with Analytix.

Your installation comes with [Analytix Manual](#) and [Analytix Tutorial](#), in PDF format suitable for creating a hard copy.

Inside the Analytix Help system you can:

- Use the search tool to find all topics based on a key word, such as "Force Elements".
- Browse through help with the Previous, and Next buttons. This will step you through the help subtopics in a logical sequence.
- You can click on colored text to get more information.

Tool Tips:

When you move the cursor over any icon on the screen, the name of the icon appears briefly below the cursor.

Linked Text

Some words in the program's Help system are highlighted and underlined. When you place the cursor over this text, the cursor becomes the hand symbol. This text indicates a link to more information on the subject. Click the text to jump to the related help page.

Menu Index

File

The File menu contains options to let you create a New file, Open an existing one, save the current drawing as a file, and Print the current drawing. It also contains functions to read and write DXF files.

Edit

The Edit menu lets you Select portions of your drawing. It also lets you Cut, Copy or Paste selected portions of the drawing.

Sketch

The Sketch menu contains all the commands to let you sketch drawing entities: Points, Lines, Arcs, Fillets, Circles, and Construction Lines are all here.

Dimension

The Dimension menu is where you can add dimensions to your sketch in order to convert it into a scale drawing.

Constrain

The Constrain menu contains options which allow you to specify which point and line of the drawing will stay fixed in any motion or statics problem. Further menu options allow you to specify line segments in the sketch as being portions of the same lines, and specify circles to be concentric.

View

The View menu lets you move or rotate selected portions of the drawing, it lets you zoom in or out, it lets you blank or unblank portions of the drawing and do level management.

Defaults

The Defaults menu lets you set default pen colors and styles, set default unit types, set default tolerances and specify whether tolerance analysis is to be statistical or absolute.

Tools

The Tools menu contains functions which let you animate your drawing, create an Envelope of it, or Trace the curve followed by a given point. It also has tools for creating Graphs and Tables of values of interest, a Calculator and Equation Solver.

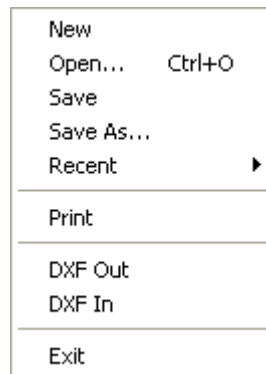
Attributes

The Attributes menu lets you view the various attributes of all the drawing entities and dimensions in the drawing. It lets you change whichever attributes are appropriate to change. There is also a function which lets you measure distances and angles from the drawing.

Analysis

The Analysis menu lets you add loads to the drawing, derive reaction forces and tolerance zones.

File



The **File** menu contains options which perform a number of disk and printer/plotter related tasks: reading and writing drawings to disk, reading and writing DXF files for communication with CAD systems, and plotting.

For more information, see

- New
- Open
- Save
- Save As
- Print

DXF Out

DWF In

New

Creates a new file with no name and no contents. Erases the current drawing.

If your current file has not been saved you will be asked whether you wish to save it before it is erased.

Open

The **File / Open** menu option allows you to open a previously saved Analytix file.

Analytix presents you with the File dialog box. It contains a file list box which will initially be filled with all the files with a .ax extension (the default Analytix extension). The dialog box also contains a file entry area, where the name of the file to be loaded may be typed in.

To select one of the files in the directory box, click on the file name. Notice that this name will be echoed in the filename box.



Alternatively the file name may be typed directly into the filename box.

When the correct file name has been entered, click on the **Open** button, or press the **Enter** key.

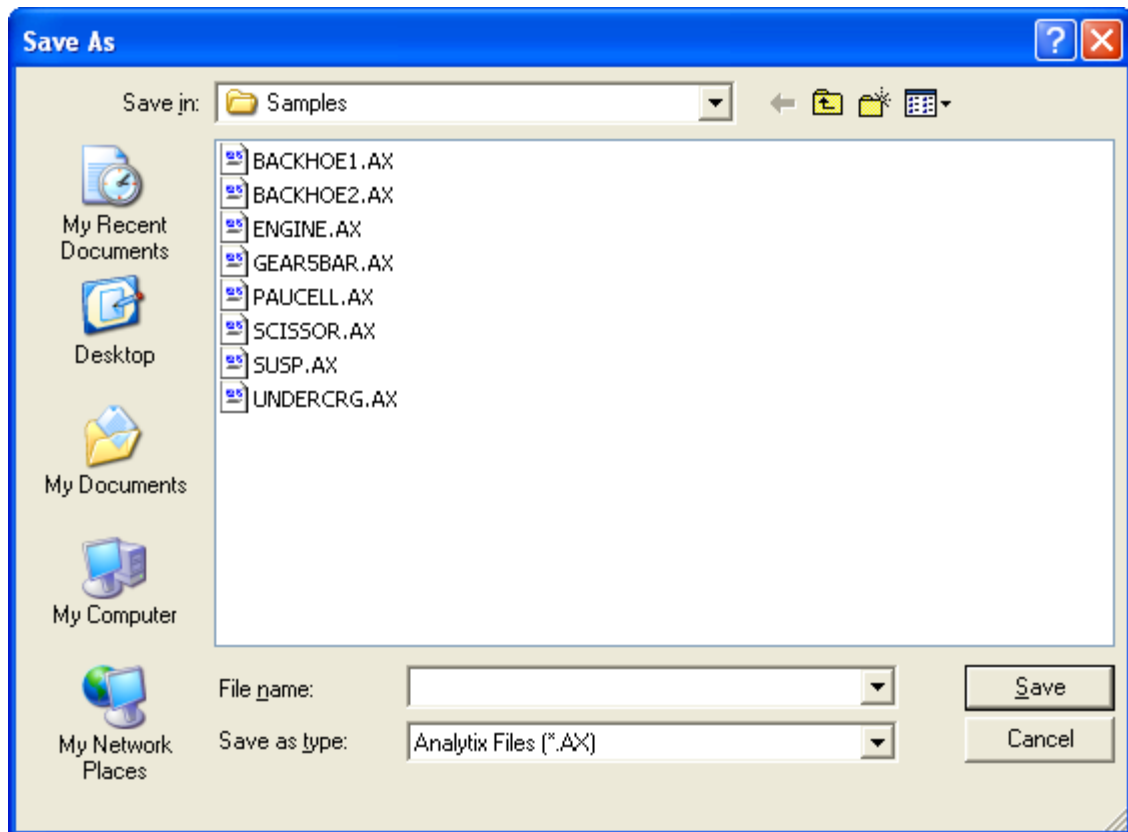
Save

The **File / Save** menu option saves the current drawing in a file with the current name. If the current drawing is untitled you will be prompted to give the file a name in a similar way to the Save as option

Save As

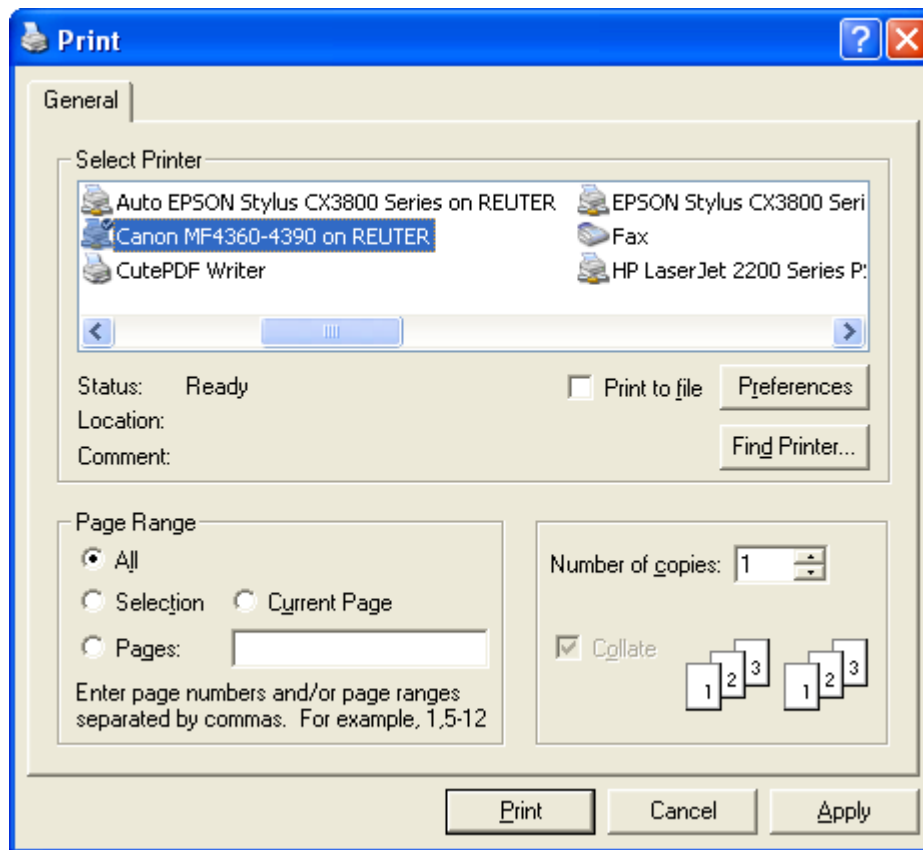
The **File / Save As** menu option prompts you for the name of the file in which the current geometry is to be saved.

A file is then created with the given name. If no file extension is given, the default extension '.ax' is used.



Print

Menu option **File / Print** brings up the standard system **Print** dialog box so you can choose a printer and print options.



Analytix will scale the drawing to best fit your page.

DXF Out

This option lets you output geometry as a DXF file. This facilitates transfer between Analytix and other CAD programs.

A filename box will appear into which you should type the name of the DXF file. The default extension .DXF will be added if no file extension is given.

In the current release of Analytix, only geometry entities are saved in DXF files. Dimensions are not saved.

DXF In

This option lets you read in DXF files created in other CAD systems.

When you select this option, you will see the same file selection box which appears with the **File / Open** menu option. This time files with the extension .DXF will be preselected in the File List box.

To read in a DXF file, select or type in the name and click on the Open button.

The current release of Analytix is only able to read geometric information from DXF files, and not dimensions.

In DXF files dimensions are regarded as ornaments and the geometry is defined by the drawing. In Analytix the dimensions are the things which define the geometry. This difference in outlook explains the fact that the DXF files are not rich enough to preserve a full dimension driven geometry description.

If you are importing a correctly sized part from a CAD system, and do not care how it is to be dimensioned, you can have Analytix automatically dimension the part using the Dimension/Automatic option.

Note that if your DXF file contains more than 350 entities, you will not be able to read it into Analytix. It is best to keep the size of Analytix files moderate to avoid excessive degradation of the system's performance.

Edit

Undo	Ctrl+Z
Redo	Ctrl+Y
<hr/>	
Select	Ctrl+S
Select All	
Geometry	Ctrl+G
Dimensions	Ctrl+D
Force Elements	
Annotations	
<hr/>	
Cut	Ctrl+X
Copy	Ctrl+C
Paste	Ctrl+V
Delete	Del
<hr/>	
Import Link...	
Export Link...	
Edit Links...	
Erase Background	
<hr/>	
Group Selected Lines/Arcs	
Ungroup Selected Lines/Arcs	

The **Edit** menu contains the Selection options, which are used to select which entities certain operations will be performed upon.

The **Edit** menu also contains the standard **Cut**, **Copy**, **Paste** operations, the **Undo** and **Redo** functions, **Erase Background**. The **Group Selected...** allows Analytix to display mass properties of the selected profile.

For more information, see

Undo

Select

- Select all
 - Geometry
 - Dimensions
 - Force Elements
 - Annotations
- Cut
- Copy
- Paste
- Import Link
- Export Link
- Edit Links
- Erase Background
- Group Selected Lines/Arcs
- Ungroup Selected Lines/Arcs

Undo

When a sketch is consistently dimensioned, Analytix automatically converts this dimensioned sketch into a scaled drawing. If the sketch and the dimensions are too far out of line with each other, the results of this process can be a little confusing. It can turn out that the scaled drawing does not look like the intended picture.

At this stage, the **Undo** option is available and will return you to the sketch before Analytix redrew it. You can now remedy the situation either by altering the sketch (using the Move, Rotate, and Select-then-drag options) or by altering one or more dimension values.

Use one of these methods:

1. Click the **Undo** button on the toolbar.
2. Hold the [Ctrl] key and press [Z].
3. Select the **Edit** menu, and choose **Undo**.

Redo

Redo reinstates actions that you have undone.

Use one of these methods:

1. Click the **Redo** button on the toolbar.
2. Hold the [Ctrl] key and press [Y].
3. Select the **Edit** menu, and choose **Redo**.

If there are no actions to redo, the **Redo** option will be grayed.

You can redo as many actions as you have undone. Performing a new action clears the list of undone actions that were saved to redo.

Select

This option is used to select entities in the drawing. Selected entities can then have one of a number of operations performed upon them. They can be Cut, Copied, Blanked, Moved, Rotated, and, depending on the type of the selected entities, a variety of more specialized functions may be performed.

Many of the menu items are "grayed out" and unpickable unless some entities (sometimes of a specific type or combination of types) are selected. Examples are the Cut and Copy options in the Edit menu, which become active only when some entities are currently selected. A more complicated example is the **Attributes / Measure** option which is only active when either a pair of points, a pair of lines, or a line and a point are selected.

Selecting a Single Entity

To select a single entity, position the cursor over that entity and click with the left mouse button.

Selecting Multiple Entities

To select multiple entities, hold down the [SHIFT] key when you click on the entity to be selected. Then the previously selected entities are not unselected and the entity you click on is added to their number.

Select All

The **Edit / Select All** menu option selects all the entities in the current drawing. Both blanked and unblanked entities are selected.

Keyboard Shortcut:

Press [Ctrl] + A.

Geometry

This option selects all the points, lines, arcs and circles in the current drawing. Dimensions are not selected. Both blanked and unblanked entities are selected.

Keyboard Shortcut:

Press [Control] + G.

Dimensions

This option selects all the dimensions in the current drawing. Geometric entities are not selected. Both blanked and unblanked entities are selected.

Keyboard Shortcut:

Press [Control] + D.

Force Elements

This option selects all the force elements in the current drawing. Applied forces and torques, springs dampers and actuators are all selected. Both blanked and unblanked entities are selected.

Annotations

This option selects all the annotations in the current drawing. Both blanked and unblanked entities are selected.

Cut

This option Cuts the currently selected entities and any dependent entities from the drawing. These entities are then pasted onto the clipboard.

What is removed

All the currently selected entities are removed from the drawing. In addition, any dimensions, applied torques or forces which refer to any of the selected entities are removed.

Keyboard Shortcut:

Press [Ctrl] + [X].

Copy

This option copies all currently selected entities to the clipboard. Any entities which depend on unselected entities are not copied.

The selected entities are not removed from the drawing.

What appears on the Clipboard

All the selected entities appear on the clipboard drawn in Metafile Picture format. This format may be pasted into a number of different Microsoft Windows applications.

Copy also puts an Analytix format description of the selected entities on the Clipboard.

Any entities which are dependent on entities which were not Copied are not placed on the clipboard.

When a line, circle, or arc is put on the clipboard, endpoints and centers for those entities are also put on the clipboard.

Keyboard Shortcut:

Press [Ctrl] + [C].

Paste

If you have previously Cut or Copied an Analytix drawing to the clipboard, this option allows you to Paste that drawing onto your current drawing.

Paste is "Grayed out" unless the clipboard contains a drawing in Analytix format. This drawing may have been Cut or Copied from the current Analytix window, or from a separate Analytix window.

When you pick **Paste**, the entities in the clipboard will be added to your current drawing. The pasted entities will then become the currently selected entities. They will be positioned in the same coordinate position they were Cut or Copied from. This can be a little confusing under certain circumstances:

1. If the entities are pasted outside the current screen window - then you will not immediately see them. You can use Zoom max / min from the **View** menu to see the whole picture.
2. If the entities have just been Copied from the same window - then the new copy will be pasted on top of the old ones. You can use View / Move to move the new copy so you can see it.

It is important to note that Cutting an entity then Pasting it back in does not necessarily give you the same object you started with because of the additional entities which are added to the clipboard along with selected entities.

For example, if you cut one edge of a triangle, the line and a pair of end points are put on the clipboard. However the line's end points are not removed from the drawing as they are necessary to define the ends of the other lines of the triangle. When you Paste the line back in, both the line and its new endpoints are pasted. Thus the line is no longer attached to the rest of the triangle and may be Moved away from it. To reattach the line you would need to use the Same Point constraint.

Keyboard Shortcut:

Press [Ctrl] + [V].

Delete

Deletes the currently selected object(s).

Keyboard Shortcut:

Press [Delete].

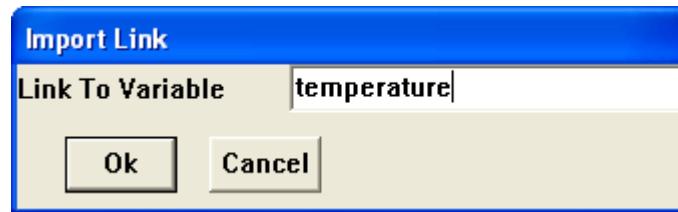
Import Link

This option lets you set up a Dynamic Data Exchange (DDE) link which feeds data into Analytix from another program running under Windows (or from another copy of Analytix running under Windows).

Edit / Import Link is selectable only if there is a Link currently on the Clipboard. Hence, before selecting this option, you must ensure that a link is present on the clipboard. How this is done depends on which program you are linking to Analytix.

If you are creating a link from another copy of Analytix, you do this using Edit / Export Link.

When you select **Import Link**, you see the Import Link dialog box.

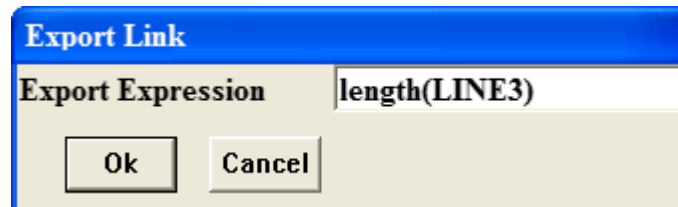


Use this box to specify the name of the variable to which the imported values are to be given. This may be any legal variable name or the name of a dimension in our Analytix drawing.

Export Link

This option is used to export a Dynamic Data Exchange (DDE) link from Analytix to another program running under Windows (or to another copy of Analytix running under Windows).

When you select **Edit / Export Link**, you will see the Export Link dialog box.



You may enter into this box any legal Analytix expression. Examples of such expressions are:

12.5

x

x²-sin(theta)

angle(LINE4,LINE6)

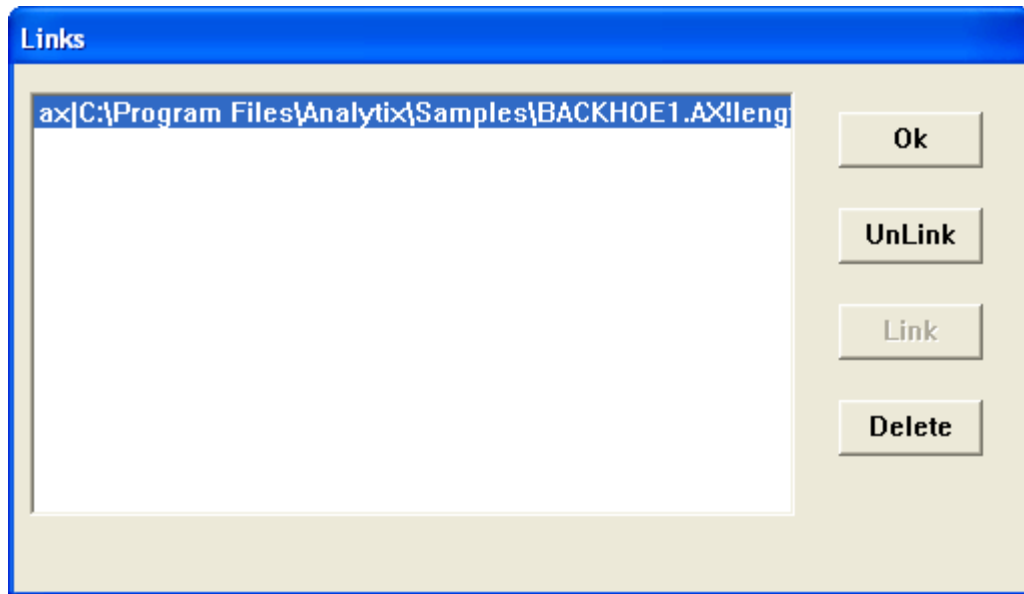
In order to create a working DDE link, after using **Edit / Export Link**, you then have to import the link from the clipboard into a second application (or second copy of Analytix). The command used for this depends on the application with which the link is being established.

If you are creating a link with a second copy of Analytix, you use Edit / Import Link for this.

Edit Links

This menu option lets you view the links which have been imported into Analytix. It also lets you temporarily or permanently disconnect the links.

When you select the option you see the Links dialog box.



This has a list of existing imported links, recorded in the following way:

Application | Topic ! Item

The application is typically the name of the program where the link initiated. The topic is typically the name of the current file being handled by that program. The item is typically the name of the individual piece of information which has been linked. If the link is with another copy of Analytix, the item is the expression which was exported. If the link is with Excel, the item is a spreadsheet cell identifier.

To temporarily disconnect a link: select the appropriate link in the link list-box. Then press the **UnLink** button.

To re-establish the link, select the link in the link list-box, then press the **Link** button.

To permanently close a link, select the appropriate link in the link list-box. Then press the **Delete** button.

Erase Background

Traces and tolerance zones, when created, are considered to be placed on a background layer.

Edit / Erase Background erases this layer.

Group Selected Lines/Arcs

This option lets you create a group out of a set of lines arcs and circles. The main use of this feature is to define a profile in order to compute area and center of gravity.

To create a group, first select all the lines and arcs which are to be included (holding down the Shift key to create a multiple entity selection).

The selected profile is now treated as a group. Whenever you select one of the constituent

entities, you will find that the whole group will be selected.

To derive the area, you should select the group then select Attributes / Info. (A shortcut is to double click on the group.)

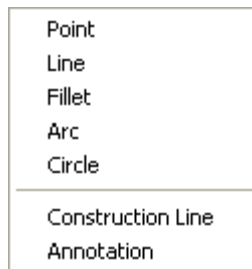
Ungroup Selected Lines/Arcs

Groups are created in Analytix using the Edit / Group Selected Lines/Arcs menu option. Once a group is established, its constituent members may not be selected individually, they can only be selected all at once.

The **Edit / Ungroup Selected Lines/Arcs** menu option allows you to break up a group in order that its individual members may again be selected.

To use this menu option, first select the group by clicking on one of its members. Now choose **Edit / Ungroup Selected Lines/Arcs**.

Sketch



Create a drawing of an object in Analytix in two basic steps:

1. Sketch the appropriate shape of the object.
2. Add dimensions to specify the exact geometry of the object.

The commands in **Sketch** menu let you draw line, arcs, circles, points fillets and construction lines.

All the **Sketch** commands in Analytix are modes. This means that once you have picked, for example, **Sketch / Line**, you can continue sketching lines until you make another menu choice.

For more information, see

- Point
- Line
- Fillet
- Arc
- Circle
- Construction Line
- Annotation

Point


There are two types of points in an Analytix drawing

Implicit - these are created as a result of sketching a line, arc or circle. For example, if you draw a line, two implicit end points are defined.

Explicit - these points are created using the **Sketch / Point** menu option.


Explicit points are created using **Sketch / Point**, implicit points are created as a result of sketching other entities.

To create an explicit point:

1. Pick the **Sketch / Point** menu option or click on the Point button .
2. Position the cursor at the location where you want to place a point.
3. Click on the mouse button.

Line

You sketch a line in Analytix as follows:

1. Choose **Sketch / Line** from the menu or click on the Line button .
2. Position the cursor at the place you wish your line to start.
3. Depress the left mouse button and, while keeping it depressed, drag the cursor to the place you wish the line to end.
4. When you have reached the line end point, release the mouse button.

Fillet

You sketch a fillet in Analytix simply by clicking the mouse on the common endpoint of a pair of lines.

A fillet is really an arc tangent to each line whose endpoints match the endpoints of the lines.


The radius of the fillet sketched by Analytix is arbitrary, and chosen by the system to "look o.k."

The required fillet radius must be specified using the **Dimension / Radius** menu option.

Occasionally the addition of a fillet to an already consistently dimensioned figure will cause the figure to become over-dimensioned. This is because adding a fillet adds three new dimensions to the system: a radius and two tangent dimensions. It is therefore best to draw fillets before completing the dimensioning of a figure.

Arc

A circular arc is sketched in Analytix in the following way:


1. Choose **Sketch / Arc** from the menu or click on the Arc button .

2. Position the cursor on the screen where one end of the arc is to be located.
3. Press the left mouse button down and drag a chord to the position where the other end of the arc is to be located.
4. When the chord is correctly positioned, release the mouse button.
5. Move the cursor to a third point which should lie on the arc.
6. Depress the left mouse button and drag the arc into the desired shape.
7. When the desired arc shape is achieved, release the mouse button.

All arcs must have their radius dimensioned before a drawing may be consistently dimensioned.

Circle

Sketch a circle in Analytix as follows:

1. Choose **Sketch / Circle** from the menu or click on the Circle button .
2. Position the cursor at the place where you want the center of your circle to be.
3. Depress the left mouse button and drag the circumference of the circle.
4. When the radius of the circle looks right, release the mouse button.

All circles must have their radius dimensioned before a drawing may be consistently dimensioned.

Construction Line

In Analytix, a construction line differs from an ordinary line because it has no specific end points, rather it is automatically sized to overlap the current figure a little.

End points of construction lines may not be dimensioned. However the construction line itself may be dimensioned (using Angle, Distance Line to Point, or Parallel Distance).

Annotation

Annotation in Analytix can be positioned absolutely on the drawing, or relative to a point of the drawing, or a line of the drawing.

Absolute annotation stays at the specified location, even when the drawing moves.

Relative annotation, on the other hand maintains its position relative to the geometry when the geometry moves.

Annotation may include text; it may also include expressions in between @ symbols. These expressions are sent to the calculator and evaluated, then displayed. This lets you display analysis results as annotation on the drawing.

Absolute Annotation

To create absolute annotation, select **Sketch / Annotate**, or click on the Annotation Icon of the Toolbox.

An Annotation dialog box now appears.

Type the text of the annotation into this box. You may select to place a border round the annotation, or you may change the font of the annotation.

Once an annotation has been created, it may be selected and moved by clicking on it and dragging it. An annotation may be edited by selecting it then using the Attributes/Info menu option, or by double clicking on the annotation.

Relative Annotation

Annotation may be specified relative to a point, a line or a point and line.

Annotation relative to a point is equivalent to annotation relative to the point and a unit line in the x direction.

To specify relative annotation, first select the point, line or point and line which you want to attach the annotation to. Then select **Sketch / Annotate** or the Annotation Icon in the Toolbox. Then click on the location of the screen where you want the annotation.

The Annotation dialog box appears. Type the text of the annotation in this box. You may also specify a border and a tag line.

The tag line joins the annotation to its referenced geometry.

Expressions in Annotations

Any expression which is typed between @ symbols in the text of the annotation will be evaluated by the calculator and the resulting number displayed on the screen.

For example if a is a variable in the calculator with a value of 2.5, the following annotation:

a=@a@

will be displayed as follows:

a=2.5

If DIMENSION23 has a reaction force of -1.275, the following annotation:

Reaction force is @react(DIMENSION23)@

will be displayed:

Reaction force is -1.275

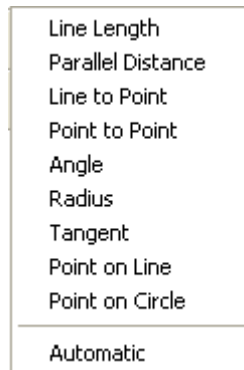
If POINT3 has coordinates (1.7,3.5), the following annotation:

(@xcoord(POINT3)@,@ycoord(POINT3)@)

will be displayed:

(1.7,3.5)

Dimension



When you have entered a sketch into Analytix, the way to convert that sketch to a scale drawing is to add a consistent set of dimensions to the sketch. You do this using the **Dimension** menu.

A good analogy is with the way drawings were made before CAD. The engineer would communicate his design to the drafting department using a not-to-scale dimensioned sketch. The sketch indicates the overall shape of the object, but the dimensions give the draftsman the precise distances and angles to use. However, if there were either too many or too few dimensions to correctly define the part, it would come back from the draftsman for clarification.

Analytix works in a similar way

1. Sketch your part without worrying if your sketch is exactly right, but ensuring the sketch does in fact resemble the intended part.
2. Add dimensions to indicate the exact geometry.

Analytix will tell you whether your part is under dimensioned, consistently dimensioned, or has a redundant dimension. This appears in the status bar in the bottom left corner of the Analytix screen.

When the sketch is consistently dimensioned, Analytix will automatically produce a scale drawing from the dimensioned sketch representation.

While the sketch is under dimensioned, Analytix makes no attempt to alter the drawing to match the constraints already entered. It simply waits until it has a consistently dimensioned drawing. This is so that when it does come to create a scale drawing it has your original, unaltered sketch to work with.

If, however, you have entered all the dimensions you care about, you can ask Analytix to finish off the dimensioning for you using the **Dimension / Automatic** menu option. Analytix will create a consistent dimensioning scheme for your drawing which includes the dimensions which you have already specified.

For more information, see

- Line Length
- Parallel Distance
- Line to Point

Point to Point
Angle
Radius
Tangent
Point on Line
Point on Circle
Automatic

Line Length

The Line Length dimension lets you specify the length of a line.

To enter a line length dimension:

1. Choose the **Dimension / Line Length** menu option.
2. Position the cursor over the line to be dimensioned.
3. Press down on the left mouse button and drag the cursor away from the line. You will notice a dimension symbol following the cursor.
4. When the dimension symbol is in an appropriate place, release the mouse button.
5. Type in the dimension value in the **Dimension Entry Box**.
6. Complete the dimension value entry by clicking on the **Y** button, or by pressing the [ENTER] key.

Note that you cannot give a length dimension to a construction line, as the construction line has by definition no specific length.

Parallel Distance

The parallel distance dimension specifies that two lines are parallel and it specifies their distance apart.

To make a Parallel Distance dimension:

1. Choose the **Dimension / Parallel Distance** menu option.
2. Click on the first line to be dimensioned.
3. Position the cursor over the second line to be dimensioned.
4. Press down on the left mouse button and drag the cursor away from the line. You will notice a dimension symbol following the cursor.
5. When the dimension symbol is in an appropriate place, release the mouse button.
6. Type in the dimension value in the **Dimension Entry Box**.
7. Complete the dimension value entry by clicking on the **Y** button, or by pressing the [ENTER] key.

Line to Point

This dimension lets you specify the perpendicular distance between a line and a point.

To make a Distance Line to Point dimension:

1. Choose the **Dimension / Line to Point** menu option.
2. Click either on the line or point to be dimensioned (or on the circumference of a circle or arc if its center point is to be dimensioned)
3. Position the cursor over the second entity to be dimensioned.
4. Press down on the left mouse button and drag the cursor. You will notice a dimension symbol following the cursor. When the dimension symbol is in an appropriate place, release the mouse button.
5. Type in the dimension value in the **Dimension Entry Box**.
6. Complete the dimension value entry by clicking on the **Y** button, or by pressing the [ENTER] key.

Point to Point

The Point to Point dimension lets you specify the distance between two points.

To make a Distance Point to Point dimension:

1. Choose the **Dimension / Point to Point** menu option.
2. Click one of the points to be dimensioned (or on the circumference of a circle or arc if its center point is to be dimensioned)
3. Position the cursor over the second point to be dimensioned (or on the circumference of a circle or arc if its center point is to be dimensioned).
4. Press down on the left mouse button and drag the cursor. You will notice a dimension symbol following the cursor.
5. When the dimension symbol is in an appropriate place, release the mouse button.
6. Type in the dimension value in the **Dimension Entry Box**.
7. Complete the dimension value entry by clicking on the **Y** button, or by pressing the [ENTER] key.

Angle

This lets you specify the angle between two lines. The lines do not need to share a common endpoint.

To make an Angle dimension:

1. Choose the **Dimension / Angle** menu option.
2. Click on the first line to be dimensioned.
3. Click on the second line to be dimensioned.
4. The angle dimension symbol will appear in either the acute or obtuse angle between the lines.
5. Type in the angle value in the **Dimension Entry Box**.
6. Complete the dimension value entry by clicking on the **Y** button, or by pressing the [ENTER] key.

Radius

This lets you specify the radius of an arc or circle.

In Analytix, all arcs, circles and fillets must be given an explicit radius.

To specify the radius of an arc or circle:

1. Position the cursor over the arc or circle.
2. Press the left mouse button and drag the dimension symbol to an appropriate position on the curve.
3. When the radius symbol is correctly placed, release the mouse button.
4. Type the radius value in the dimension entry box.
5. Click on the **Y** button or press [ENTER].

Tangent

This lets you specify that a circle or arc is tangent to a line or to another circle or arc.

To specify that two entities are tangent:

1. Click on the first entity (line, circle or arc).
2. Click on the second entity.

Point on Line

This lets you specify that a given point lies on a given line.

To specify a Point on Line constraint:

1. Select **Dimension / Point on Line**.
2. Click on the first point or line.
3. Click on the second line or point.

Point on Circle

This lets you specify that a given point lies on a given circle.

To specify a Point on Circle constraint:

1. Select **Dimension / Point on Circle**.
2. Click on the first point or circle.
3. Click on the second circle or point.

Automatic

This menu option tells Analytix to complete the dimensioning of the drawing itself.

This is a very powerful feature and is of particular use in these circumstances:

- When you do not know what else to dimension.

- When you have read in from file the correct geometry for a part and do not care how it is dimensioned.
- When you have entered all the dimensions you are currently concerned with and wish Analytix to fill in the rest.

There are many different ways to consistently dimension a given drawing. Analytix has a suite of heuristic algorithms which try to find "reasonable" dimensions to fill in. However there is no guarantee that the dimensions it uses are the ones which you want.

Analytix fills in a value for the dimensions which it creates by measuring from the sketch and scaling to make them match any dimensions which have already been entered. The value thus achieved is then rounded.

Constrain

Same Line	Ctrl+L
Same Point	Ctrl+P
Fix Point/Line	Ctrl+F
Horizontal	
Vertical	

The **Constrain** menu has options which let you constrain line segments to be collinear, circles and arcs to be concentric, and to set which point and line of the figure is to stay fixed

For more information, see

Same Line
Same Point
Fix Point
Horizontal
Vertical

Same Line

Sets the selected line segments to be collinear.

This option is grayed out unless the current set of selected entities comprises two or more lines.

To constrain a number of line segments to be collinear:

1. Make sure you are in Selection mode, either by picking **Edit / Select** from the menu or by clicking the right mouse button.
2. Click on the first line to be constrained.
3. Holding down the shift key, click on the second line to be constrained.
4. Repeat step 3 for the rest of the lines to be constrained.
5. When the correct set of lines is selected, pick **Constrain / Same Line**.

If the addition of the Same Line constraint causes the drawing to be over dimensioned, then you will see the Redundant Dimension message. Otherwise the lines will be constrained to be

collinear.

To remove a collinear constraint, you must delete the line, then redraw it.

Same Point

Sets the currently selected points and/or circle centers to be identical.

This option is grayed out unless the current set of selected entities comprises two or more points, arcs or circles.

To constrain a number of points to be the same:

1. Make sure you are in Selection mode, either by picking **Edit / Select** from the menu or by clicking the right mouse button.
2. Click on the first point to be constrained (Or click on the circumference of a circle or arc to constrain its center).
3. Holding down the shift key, click on the second point to be constrained (Or click on the circumference of a circle or arc to constrain its center).
4. Repeat step 3 for the rest of the points to be constrained.
5. When the correct set of points is selected, pick **Constrain / Same Point**.

If the addition of the Same Point constraint causes the drawing to be over dimensioned, then you will see the Redundant Dimension message. Otherwise the points will be constrained to be the same.

Fix Point / Line

This option lets you specify a point and a line of the drawing to be fixed. The fixed point must lie on the fixed line.

This menu option is grayed out unless either a point, a line or a point and a line are currently selected.

To specify the fixed point and line:

1. Select the point (or line) to be fixed.
2. (Optionally) select the line (or point) to be fixed.
3. Choose the **Constrain / Fix Point/Line** option.

A pin icon will appear at the fixed point and a roller icon will appear in the middle of the fixed line.

When is it important to fix a point and line?

When velocities and accelerations are specified in Analytix, they are always relative. In order to convert these velocities and accelerations to absolutes, you need to tell Analytix what is fixed and what is moving.

Hence, for dynamic and kinematic analysis, it is necessary to specify a fixed point and line. Many static problems assume some points of the figure are anchored, for these problems it is necessary to fix a point and line.

If you use the tolerance zone analysis, you should specify a fixed point and line. These will then be assumed to be in true position and tolerance zones of other points will be displayed.

If you want to measure velocities and accelerations with respect to some moving (even accelerating) frame of reference, all you need to do is specify a point and line in that frame as being fixed.

If there are several fixed points in your drawing, you need only specify one as fixed, and fix a line joining two of the points.

Horizontal

This option lets you specify a line to be horizontal.

This menu option is grayed out unless a line is currently selected.

To specify a horizontal line:

1. Select the line.
2. Choose the **Constrain / Horizontal** option.

There can only be one line in your figure which is constrained to be either horizontal or vertical. Other horizontal or vertical lines are specified by using the parallel distance dimension or by specifying their angle to the constrained line.

Vertical

This option lets you specify a line to be vertical.

This menu option is grayed out unless a line is currently selected.

To specify a vertical line:

1. Select the line.
2. Choose the **Constrain / Vertical** option.

There can only be one line in your figure which is constrained to be either horizontal or vertical. Other horizontal or vertical lines are specified by using the parallel distance dimension or by specifying their angle to the constrained line.

View

Move	
Rotate	
<hr/>	
Zoom Box	
Zoom Min/Max	Ctrl+Z
Zoom Out (2x)	
Zoom Out (4x)	
Pan	
<hr/>	
Blank	Ctrl+B
Unblank All	Ctrl+U
Change Level...	
Blank/Unblank Level...	

The **View** menu contains options to let you **Move** and **Rotate** selected objects, **Zoom** in or out on the drawing and **Blank** selected objects. It also has options to perform level management.

For more information, see

- Move
- Rotate
- Zoom box
- Zoom min/max
- Zoom out
- Blank
- Unblank all
- Change Level
- Blank Unblank Level

Move

Lets you move the currently selected portion of the sketch.

To move a portion of your drawing:

1. Select the geometrical entities to be moved. (Dimensions on their own are not moved, but follow the geometry.) To select multiple entities use the shift key.
2. Choose **Move** from the **View** menu.
3. Position the cursor over the entities to be moved.
4. Press down on the left mouse button and drag the entities to their new position.
5. When the new position is reached, release the mouse button.

What is moved?

If your set of selected entities shares points with some non-selected entities, then the shared

points are not moved.

For example, if you select a single edge of a polygon, then perform a move, nothing will move as both vertices of the line are shared with non-selected edges.

If you select two adjacent sides, then perform a move, the common point will move.

If you select three adjacent sides, both common points will move. This has the effect of moving the complete middle edge.

Rotate

This lets you rotate the currently selected portion of the sketch.

To perform a rotation do the following:

1. Select the geometrical objects to be rotated (Dimensions on their own are not rotated, but follow the geometry.)
2. Choose **Rotate** from the **View** menu.
3. Click on the center of the rotation (this may be any point on the screen.)
4. Position the cursor over some part of the object to be rotated (away from the center of rotation).
5. Press down the left mouse button and drag the object round.
6. When the object is correctly positioned, release the mouse button.

What is rotated?

If your set of selected entities shares points with some non-selected entities, then the shared points are not rotated.

For example, if you select a single edge of a polygon, then perform a rotate, nothing will move, as both vertices of the line are shared with non-selected edges.

If you select two adjacent sides, then perform a rotate, the common point will be rotated about the center.

If you select three adjacent sides, both shared points will move, with the effect that the common line will be seen to rotate about the center.

Zoom Box

This function lets you zoom in on your drawing.

To Zoom in on the drawing:

1. Choose the **View / Zoom** in menu option.
2. Position the cursor at the top left corner of the region which you wish to fill the entire window.
3. Press down on the left mouse button and drag the mouse to the bottom right corner of the region, creating a rectangle delineating the region.
4. Release the mouse button.

Zoom Min / Max

This option zooms to fit the drawing optimally to the screen.

Zoom Out

These options zoom out by factors of 2 or 4.

Blank

Blanks the currently selected entities.

A blanked entity is not visible on the screen but it is still there. For example, a dimension still constrains the drawing when it is blanked.

Blanked entities are not selectable except by using the Select All options.

Unblank All

Unblanks all the currently blanked entities.

More selective control of which entities are visible and which are not may be achieved using Blank / Unblank Level.

Change Level

All entities in Analytix are drawn on a specific "level". There are 16 different levels.

Levels may be blanked and unblanked individually, thus giving you a finer degree of control over what is visible than the ordinary Blank and Unblank functions.

By default everything is placed on the first level.

If there are no currently selected entities, **View / Change Level** changes the level where subsequent entities are placed.

If you have selected entities, these will be moved to the new level.

To change levels

1. (Optionally) select entities whose level you wish to change.
2. Choose **Change Level** from the **View** menu.
3. The Level Selection Box appears. Click on the level you wish to change to.
4. Close the Level Selection Box by double clicking on its System Menu Box in the top left corner.

Blank / Unblank Level

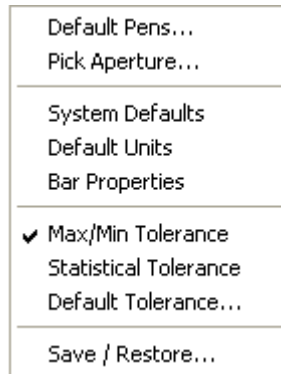
This option lets you select which levels are visible and which are not.

When you pick the **Blank / Unblank Level** menu option, you will see the Level Selection Box. The currently visible levels will be displayed normally, the currently blanked levels in reverse.

Click on the miniature screen representing a level to toggle it from blanked to unblanked or vice versa.

When you are finished, double click on the System Menu Button of the Level Selection Box to close the Box and cause the changes to go into effect.

Defaults



The **Defaults** menu lets you set up various defaults for the system. It lets you define pen colors and styles, units, default tolerance and tolerance types, and gravitational constant.

For more information, see

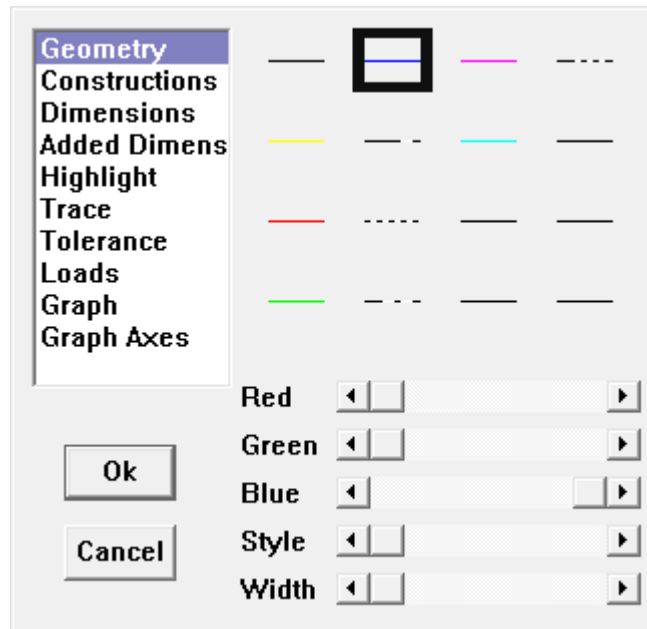
- Default Pens
- Pick Aperture
- System Defaults
- Default Units
- Bar Properties
- Max/Min Tolerance
- Statistical Tolerance
- Default Tolerance
- Dynamics Defaults

Default Pens

This menu option lets you set the colors and styles (solid, dotted, dashed, etc.) of the lines used by Analytix for various parts of your drawing.

Analytix has sixteen logical pens. The Default Pens dialog box allows you to set which of these sixteen pens is used for each different type of entity. It also lets you set the color, style and width of each pen.

The List box in the top left corner of the dialog box lists the different type of entities which may be drawn. Sixteen buttons in the right of the dialog box show the current color and style of the different pens. Sliders at the bottom of the screen control the color and style of the current pen.



The different entities which may be given an individual pen are:

- Geometry - all lines (except construction lines), arcs and circles.
- Constructions - Construction lines.
- Dimensions - all dimensions created by the user.
- Added Dimensions - dimensions created by Analytix when Dimension/Automatic is invoked.
- Highlight - the pen used to highlight selected entities.
- Graph - the graph line.
- Graph axes.

When you click on one of these entities the current default pen for that entity is highlighted. To change the default pen, position the cursor over one of the sixteen sample pens and click the mouse button.

To change the color and style of the current pen, use the Red Green and Blue slider bars to set red green and blue color values for the new color, use the style bar to set its style.

Note that changing the default pen for a given entity type means that, until the default is changed again, all objects of that type subsequently drawn will be drawn with the new pen. Existing objects will not be affected.

Changing the color and style of a given pen affects all objects in the drawing of that type.

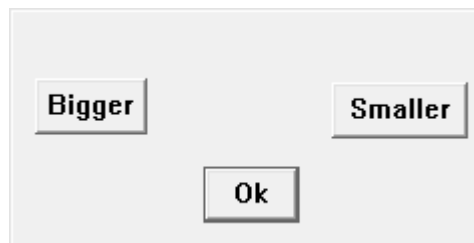
To change the pen on existing objects, use the Attributes / Pen menu option.

Pick Aperture

The pick aperture is a small box around the current cursor location which Analytix uses to decide when the cursor is close enough to be considered to lie on top of a given entity.

For example, when you are in Select mode, if you click the mouse button when a particular point lies within the pick aperture, then that point will be selected. If a line crosses through the pick aperture, but neither of its end points lie in the pick aperture, then that line will be selected.

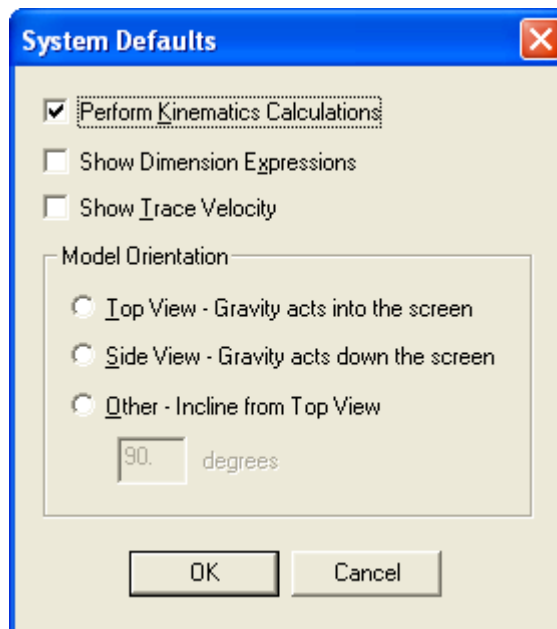
The **Defaults / Pick Aperture** menu option allows you to make the region bigger or smaller. Multiple clicks are meaningful.



System Defaults

This menu option lets you specify certain settings.

- Whether kinematics is to be performed.
- Whether dimensions are to be shown as numerical values or as expressions.
- Units for measuring angles.
- Units for angular velocities and accelerations.



If Kinematics is enabled, Analytix calculates velocities and accelerations as well as positions for points and lines in the drawing. Turning Kinematics off will speed up the time it takes to make changes to the drawing. (Except in the animation tools, where **Kinematics** is automatically turned off.)

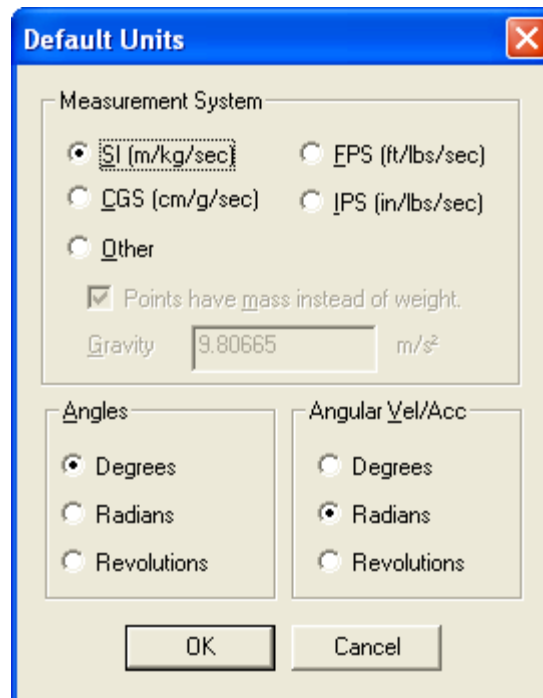
If **Show Dimension Expressions** is enabled, then any dimensions which are given as algebraic expressions will be displayed as expressions. If **Show Dimension Expressions** is not enabled, then the value of the expression will be displayed.

As it is common practice for engineers to use different units for angles and angular velocities, Analytix lets you set these units separately.

The initial default is for angles to be measured as degrees and for angular velocities and accelerations to be measured in radians/time and radians/(time)²

Default Units

You can set the units using the Defaults/Units menu option:



Your options are:

- SI (kg/m/s)
- CGS (cm/g/s)
- FPS (ft/lbs/sec)
- IPS (inch/lb/sec)
- Other

If you choose Other, you need to specify the gravitational acceleration, and whether the basic unit is a mass (as in metric units) or a weight (force - as in English units).

Here is an example Info Box, with unit information in place:

Length	3.60555 m
Ang. Velocity	0 rad/s
Ang. Accel.	-0 rad/s ²
Tolerance	+ 0 m - 0 m
Inertia	<input type="text" value="0"/> kg·m ²
Bar Properties	
Area	A <input type="text" value="0"/> m ²
Elasticity	E <input type="text" value="0"/> Pa

Ok Cancel

Bar Properties

This option lets you set default values for cross sectional area and modulus of elasticity. These are used in indeterminate truss calculations.

Cross-sectional Area A	<input type="text" value="0.2"/> m ²
Modulus of Elasticity E	<input type="text" value="30000000"/> Pa

Ok Cancel

To set different values for A and E for a particular line select that line then use **Attributes / Info**.

Max / Min Tolerance

This option sets the tolerance analysis functions to return absolute tolerances, rather than statistical tolerances.

Tolerances input for dimensions are treated as absolute bounds, and the tolerances calculated for

measurements from the drawing are absolute bounds on that measurement.

Tolerance zones calculated under max/min tolerancing represent the region inside which the point **must** lie.

Statistical Tolerance

This option sets the tolerance analysis functions to return statistical tolerances rather than absolute tolerances.

The tolerances are set to come from Normal Distributions, which can be centered at the true value of the dimension, or may be centered away from the true position for asymmetric tolerance situations.

If U and L are the upper and lower tolerances and V is the stated value of the dimension, then the Normal Distribution has standard deviation points at V-L and V+U. That is, the actual value of the dimension is taken to come from a Normal Distribution mean $V + (U-L)/2$ and standard deviation $(U+L) / 2$.

For example if the stated value of the dimension is $V=10.3$, and the upper tolerance is 0.03 and the lower tolerance is 0.01, then we assume a Normal Distribution mean 10.31 and standard deviation 0.02.

Tolerance outputs for dimensions are standard deviation points of a Normal Distribution. If the upper and lower resultant tolerances are the same then the distribution is centered at the true value of the measurement. If the upper and lower tolerance values are not the same then the tolerance is asymmetrical and the Normal Distribution is off-centered.

Tolerance zones are the standard deviation equiprobable curve for the bivariate Normal Distribution of the position of the point of interest.

Note

Notice that, if you enter 3-standard-deviation points rather than 1-standard-deviation point for your input tolerances, then your output tolerances will be 3-standard-deviation points.

Example

In the drawing shown, all the lengths have upper and lower tolerances of +0.01. We have measured the length of the undimensioned tab at the top right of the drawing. The upper measurement is under max/min tolerance conditions, the lower measurement under statistical tolerance conditions.

We see that under max/min conditions the tolerances stack up additively, under statistical conditions they stack up as the root sum squared.

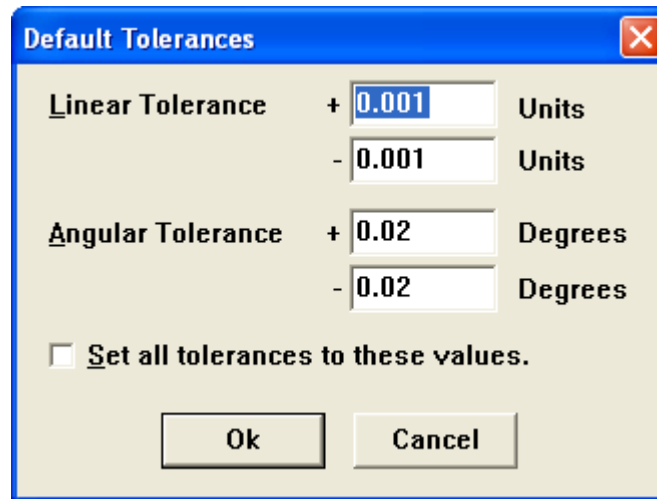
Default Tolerance

This option lets you set default tolerances for all the linear and angular dimensions in your figure.

Tolerances may also be set individually by selecting a dimension and using the Attributes / Info menu option.

Setting the default tolerances causes all dimensions in the figure to have these tolerances. If you

have already entered some special tolerances for specific dimensions, it will overwrite these. You should therefore use this option before setting specific tolerances using the dimension's Info box.



Dynamics Defaults

The Dynamics Defaults dialog box lets you specify three things:

- Whether your units use mass (inertial mass) or weight (force).
- The gravitational constant for your system of units.
- How your drawing is aligned with the gravitational force.

Standard Units

If you are using any of the standard unit systems included in Analytix: **SI**, **fps**, or **ips**, then you should click on the button corresponding to that system. Analytix will automatically set whether it is a Mass system or a Weight system, and will enter the appropriate gravitational constant.

Otherwise, click on the **Other** button, and you will need to set the either the **Mass Units** or the **Weight Units** button and enter in the **Gravitational Constant**.

Gravitational or Absolute Units

In Analytix, you may specify either the mass or the weight of objects. Which one you adopt will depend on whether you are using a gravitational system of units or an absolute system.

If you are using a gravitational system (such as fps or ips) you will probably wish to use weight rather than mass (pounds rather than slugs).

If you are using an absolute system (such as SI units) you will probably want to use mass rather than weight (kilograms rather than Newtons).

In either case you need to enter the gravitational constant for the system of units you are using. (That is the force exerted by gravity on a unit mass).

If you are using a gravitational system, then Analytix uses the gravitational constant to calculate

the dynamic force acting on a given accelerating weight.

If you are using an absolute system, Analytix uses the gravitational constant to calculate the body force on the model due to gravity.

Drawing Alignment

In calculating resultant forces, Analytix considers three types of forces applied to the model.

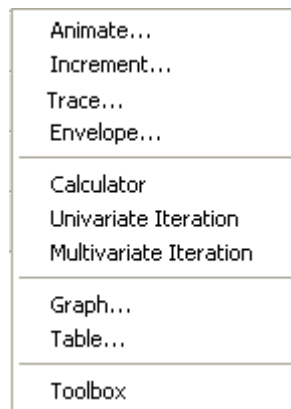
- External applied forces and torques (Created using the Analysis / Add Load menu option)
- Dynamic forces due to accelerating masses and moments of inertia.
- Body forces due to the effect of gravity on masses.

If your drawing is aligned horizontally then only the first two types of forces are considered.

If your drawing is aligned vertically, then each point has a gravitational force applied. The force is equivalent to the mass times the gravitational constant and is applied in the downward (negative) y direction.

If your drawing is inclined at some other angle θ , a force is applied which is equivalent to the mass times the gravitational constant times $\sin(\theta)$. The force is applied in the negative y direction. This models the situation where the part is on a plane inclined at θ degrees to the horizontal.

Tools



This menu contains a number of tools to let you view the behavior of your model. There are drawing animation tools, calculation tools, drawing information tools and a switch to display the toolbox icon bar.

The animation tools: **Animate**, **Increment**, **Trace** and **Envelope** are grayed out if the drawing is not consistently dimensioned.

For more information, see

- Animate
- Increment
- Trace

Envelope
Calculator
Univariate Iteration
Multivariate Iteration
Graph
Table
Toolbox

Animate

The **Animate** tool lets you watch your drawing move as Analytix steps the value of a variable through a prescribed range.

The variable will often be the value of some dimension.

When you pick **Tools / Animate**, you will see the Iteration Parameter Box. This lets you enter a variable for the parameter to be iterated on and initial and final values for the parameter. It also has a place to enter the step size to use.

Frequently the iteration parameter will be one of the dimensions of the drawing. In this case, you can position the text cursor in the Iterator Box then go back into the main drawing and select the dimension.

The dimension's name will be automatically entered into the Iterator Box.

When you have filled in the iteration parameters, click on **Ok** to start the animation.

The iteration parameter is remembered by Analytix. Next time you use **Animate**, **Trace** or **Envelope** you will notice that the parameter's details are already in the Iteration Parameter Box. To perform the same animation again, you just need to click on **Ok**.

Increment

This tool lets you step through an animation by incrementing (or decrementing) a particular variable. The variable would typically be a dimension or a variable on which one or more dimensions depend.

The Increment box has an edit control to enter the variable to be incremented (Iterator), and one to enter the quantity to be added or subtracted (Step Size).

To increment a dimension, make sure the text cursor is in the Iterator box, then return to the main Analytix window and select the dimension which you wish to alter.

Clicking on the + box adds the quantity in the Step Size box to the variable (or dimension) in the Iterator box, then causes the drawing to be recalculated.

Clicking on the - box subtracts the quantity in the Step Size box from the variable (or dimension) in the Iterator box, then causes the drawing to be recalculated.

Close the Increment box by double clicking in the system menu box in its top left corner.

Trace

This tool draws the path followed by a point during the course of an animation.

To use the **Trace** tool, you must have:

- A consistently dimensioned drawing.
- A single point selected.

Unless you have both of the above, the **Trace** menu option is grayed.

When you select the trace tool, the Iteration Parameter Box appears. Fill in the variable or dimension on which the motion depends, its start and end values and step size.

If you have already used one of the animation tools, the information from your last use should already be in the Iteration Parameter Box.

The Trace Tool draws on a special layer of the drawing called the background layer. Traces cannot be individually selected and deleted. Instead you delete the whole background layer using the Edit / Erase Background menu option. The background layer is also used by the Tolerance Zone analysis tool.

Envelope

The **Envelope** tool performs an animation where the screen is not refreshed between frames. The effect of this is to give a representation of the total space occupied by the part over the prescribed range of motion.

When you select the envelope tool, the Iteration Parameter Box appears. Fill in the parameter or dimension on which the motion depends, its start and end values and step size.

If you have already used one of the animation tools, the information from your last use should already be in the Iteration Parameter Box.

The envelope is only drawn temporarily. It is removed whenever you cause the screen to be refreshed.

Calculator

The Calculator is a tool which lets you evaluate expressions and define variables.

Expressions can be numeric:

$5*(8-4.6)$

$\text{sqrt}(17^2-5^2)$

or may contain variables:

$a/(b^{**2}-c^{**2})$

$\text{distance}(\text{point27},\text{point13})$.

You can assign values to variables:

a = 27
b = cos(45)
DIMENSION17 = 10

or you can assign expressions to variables:

a = (b-c)/(d+e)
DIMENSION21 = sqrt(a*a+b*b)

Variables (except for dimension names) must be at most 10 characters long and must start with a letter:

e.g. rad , x12 , bladevel

There is a special set of variables which are predefined by the drawing. These are the dimensions. The dimension name consists of DIMENSION followed by the number of that dimension.

e.g. DIMENSION17 , DIMENSION237

If you assign a dimension variable, this has the effect of inserting the value or expression on the right hand side of the assignment into that dimension in the drawing.

If the expression which you assign to a variable itself contains variables which have not been declared yet, the Calculator will declare the value of the expression to be undefined. When the necessary variables are defined, the calculator will fill in the values.

You cannot enter circular definitions: e.g.

a = b+c
c = 2*b-a

This is not allowed as c is in the expression which defines a and a is in the expression which defines c.

You can, however enter:

a = b+c
b = 27
c = sqrt(b)

even though b and c are not defined at the time when a is declared.

Calculator Expressions

Functions

Expressions

The arithmetic operations used in the calculator are:

sum	a+b
difference	a-b
product	a*b

division	a/b
power	a^b or $a**b$
parentheses	$a-(b+c)$

The following logical expressions are available:

greater than	$a>b$
less than	$a<b$
greater than or equal	$a>=b$
less than or equal	$a<=b$
equal	$a==b$
not equal	$!=$
not	not a
and	a and b
or	a or b

For example, the following expression returns 1 if a lies between 1 and 2 and 0 otherwise:

$\text{if } ((a>=1) \text{ and } (a<2), 1, 0)$

Functions

Here we will list the different functions which are available in Analytix. These functions may be used as part of expressions, either in the calculator or in specifying what expression to graph or table. Functions take as arguments one or more real numbers, or points, or lines or dimensions.

Functions By Category

Functions - Alphabetical

Functions By Category

Mathematical

- $\arccos(\text{real1})$
- $\arcsin(\text{real1})$
- $\arctan(\text{real1})$
- $\cos(\text{real1})$
- $\exp(\text{real1})$
- $\ln(\text{real1})$
- $\log(\text{real1})$
- $\log_{10}(\text{real1})$
- $\sin(\text{real1})$
- $\sqrt{\text{real1}}$
- $\text{step}(\text{real1})$
- $\tan(\text{real1})$

Geometrical

- angle(line1, line2)
- distance(point1, point2)
- distance(point1, line1)
- length(line1)
- xcoord(point1)
- ycoord(point1)

Logical

- if(condition, statement, statement)

Area properties

- area(group1)
- lmax(group1)
- lmin(group1)
- lx(group1)
- lxy(group1)
- ly(group1)
- lz(group1)
- xcentroid(group1)
- ycentroid(group1)

Velocities & Accelerations

- aangle(line1, line2)
- acc(point1)
- adistance(point1, point2)
- adistance(point1, line1)
- alength(line1)
- angacc(line1)
- angvel(line1)
- vangle(line1, line2)
- vdistance(point1, point2)
- vdistance(point1, line1)
- vel(point1)
- vlength(line1)
- xacc(point1)
- xvel(point1)

- `yacc(point1)`
- `yvel(point1)`

Forces, Torques, Bending Moments & Deflections

- `react(dimension1)`
- `react(point1,line1)`
- `xreact(point1,lin1)`
- `yreact(point1,line1)`
- `react(actuator1)`
- `moment(point1,line1)`
- `shear(point1,line1)`
- `stress(line1)`
- `xdef(point1)`
- `ydef(point1)`

Functions - Alphabetical

`angle(line1,line2)`

Returns the acceleration of the angle between line1 and line2.

`acc(point1)`

Returns the acceleration of point1.

`adistance(point1,point2)`

Returns the acceleration of the distance between point1 and point2.

`adistance(point1,line1)`

Returns the acceleration of the distance between line1 and line2.

`angacc(line1)`

Returns the angular acceleration of line1.

`angle(line1,line2)`

This function returns the angle between line1 and line2. The angle is given in current angular units (by default degrees).

`angvel(line1)`

Returns the angular velocity of line1.

`arccos(real1)`

This function returns the inverse cosine of real1 in the range between 0 and 180. The value of real1 must lie between -1 and 1.

`arcsin(real1)`

This function returns the inverse sine of real1 in the range between -90 and 90. The value of real1 must lie between -1 and 1.

arctan(real1)

This function returns the inverse tan of real1 in the range between -90 and 90.

area(group1)

Returns the area enclosed by the profile defined in group1.

cos(real1)

Returns the cosine of angle real1. Real1 is measured in current angular units (by default degrees).

distance(point1,point2)

Returns the distance between point1 and point2.

distance(point1,line1)

Returns the perpendicular distance between point1 and line1.

exp(real1)

Returns e^{real1}

if(logical expression,real1,real2)

Returns real1 if logical expression is true, returns real2 otherwise.

Imax(group1)

Returns the maximum area moment of inertia through the centroid of the object defined by group1.

Imin(group1)

Returns the minimum area moment of inertia through the centroid of the object defined by group1.

Ix(group1)

Returns the area moment of inertia about the x-axis through the centroid of the object defined by group1.

Ixy(group1)

Returns the area product of inertia of the object defined by group1.

Iy(group1)

Returns the area moment of inertia about the y axis through the centroid of the object defined by group1.

Iz(group1)

Returns the area moment of inertia about the z axis through the centroid of the object defined by group1.

length(line1)

Returns the length of line1.

ln(real1)

Returns the natural logarithm of real1. Real1 must be positive.

log(real1)

Returns the natural logarithm of real1. Real1 must be positive.

log10(real1)

Returns the base 10 logarithm of real1. Real1 must be positive.

moment(point1,line1)

Returns the bending moment of line1 at point1.

react(actuator1)

Returns the force in actuator1

react(dimension1)

Returns the reaction force (or torque) in dimension1.

react(point1)

Returns the reaction force on point1.

shear(point1,line1)

Returns the shear force at point1 on line1.

sin(real1)

Returns the sine of angle real1. Real1 is measured in current angular units (by default degrees).

sqrt(real1)

Returns the square root of real1. Real1 must be positive.

step(real1)

Returns 0 if real1 < 0; returns 1 if real1 >= 0.

stress(line1)

Returns the stress in line1 (used in truss analysis).

tan(real1)

Returns the tangent of angle real1. Real1 is measured in current angular units (by default degrees).

vangle(line1,line2)

Returns the velocity of the angle between line1 and line2.

vdistance(point1,point2)

Returns the velocity of the distance between point1 and point2.

vdistance(point1,line1)

Returns the velocity of the distance between point1 and line1.

vel(point1)

Returns the velocity of point1.

xacc(point1)

Returns the x component of the acceleration of point1.

xcentroid(group1)

Returns the x coordinate of the centroid of the area defined by group1.

xcoord(point1)

Returns the x coordinate of point1.

xdef(point1)

Returns the x component of the deflection of point1 (used in truss analysis).

xreact(point1)

Returns the x component of the reaction force on point1.

xvel(point1)

Returns the x component of the velocity of point1.

yacc(point1)

Returns the y component of the acceleration of point1.

ycentroid(group1)

Returns the y coordinate of the centroid of the area defined by group1.

ycoord(point1)

Returns the y coordinate of point1.

ydef(point1)

Returns the y component of the deflection of point1 (used in truss analysis).

yreact(point1)

Returns the y component of the reaction force on point1.

yvel(point1)

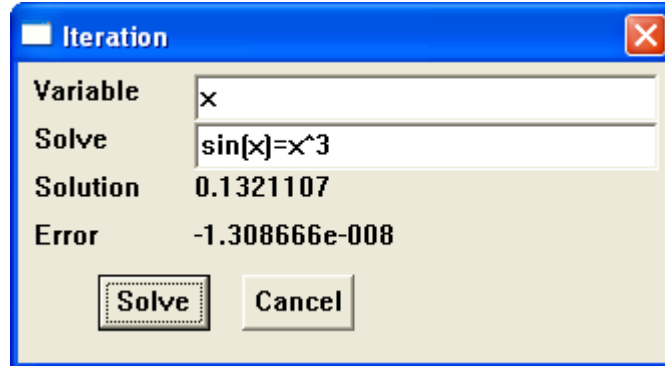
Returns the y component of the velocity of point1.

Univariate Iteration

This tool implements a univariate root finder.

This uses an iterative technique to solve equations which cannot be written as a simple expression.

Enter the variable for which you wish to solve in the Variable box, and the equation you want solved in the Solve Box. Press **Ok** to calculate. The solution and error will appear below if the numerical analysis algorithms converge to a solution. Otherwise you will be given an error message.



While the Iteration tool is useful for solving equations, its real power comes when it is coupled with the drawing. This coupling is achieved when both the following are true:

- The variable is an input to the drawing (either a dimension name or a variable on which one or more dimensions depend).
- The equation to be solved includes some functions which depend on the drawing (such as angles or distances).

When drawing entity names (lines, points, circles, dimensions) are required in the Iteration Box they may be acquired by positioning the text cursor in the appropriate entry field then selecting the entity in the main drawing.

Multivariate Iteration

This tool implements a multivariate root finder.

It allows you to simultaneously solve a system of equations in a number of unknowns. (The number of equations must be equal to the number of variables.)

Multivariate Iteration

$x*y=25$

Variables	Equations	Conditions
x y	$x+y=15$ $x*y=25$	

Max Iterations: 25 Accuracy: 1.e-006 Tolerance: 1.e-006

Result: **Converged successfully**

Solve Cancel Delete Modify Add V. Add E. Add C.

To specify a multivariate iteration problem, you need to specify the names of the variables whose values you wish to find. You also need to specify the equations which you wish to solve.

Variables may be any calculator variables, or the names of any dimensions. Equations may be any valid calculator expressions.

To enter a variable, type into the text entry field at the top of the multivariate iteration dialog, then click the **Add V.** button.

To enter an equation, type into the text entry field at the top of the multivariate iteration dialog, then click the **Add E.** button.

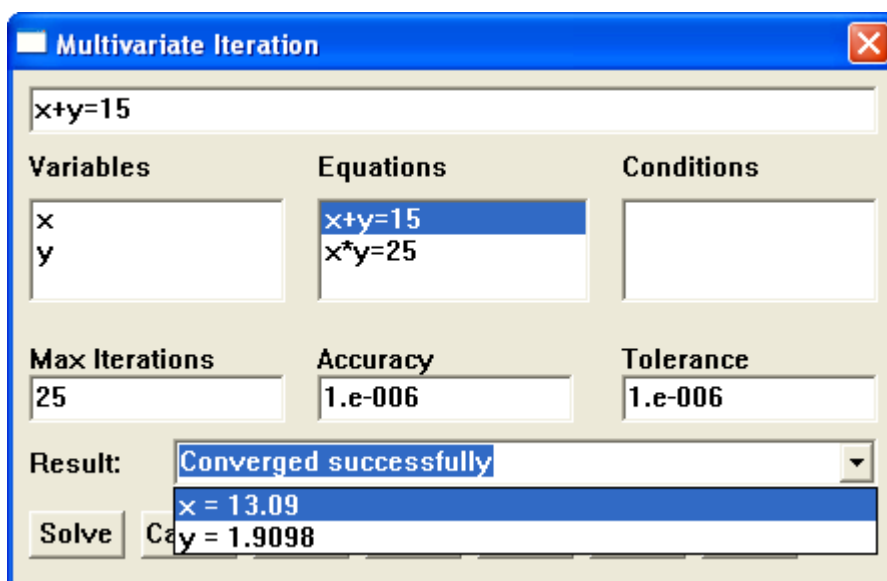
The example above shows the dialog box for solving the system

$$x+y=15$$

$$x*y=25$$

for x and y .

The value for x and y which the solver found may be inspected by clicking on the down arrow at the right of the Result box.



Conditions

It is also possible to specify conditions which are to be set for each of the equations. These conditions take the form of assignment statements, such as $x=23$, $\text{DIMENSION13}=90$, $\text{DIMENSION27}=2*t$, etc.

A set of such conditions may be attached to each equation. Before it tests the value of the equation, the multivariate root finder will first perform all the condition assignments attached to that equation.

The condition assignments are particularly useful for mechanism synthesis problems.

To enter a condition, first select the equation it is to be attached to. Then type into the text entry field at the top of the multivariate iteration dialog, then click the **Add C.** button.

Delete & Modify

To select a variable or equation, click on its representation in the variable list or the equation list. To select a condition, first select the equation to which the condition is attached, then click on the condition in the condition list.

To delete a variable, equation or condition, first select it, then press the **Delete** button.

To modify a variable, equation or condition, first select it, then modify the text in the text entry field, then press the **Modify** button.

Setting Computation Parameters

You can set three parameters which let the iterative equation solver decide when to accept a solution, and when to give up trying to find a solution.

The maximum number of iterations specifies how many iterations of a Newton Raphson root finding algorithm will be performed before the solver gives up and returns a Numerical Error.

The Accuracy and Tolerance specify how close you need your solution to lie to the real solution. The solver accepts a solution as successfully converged if each variable is within the accuracy value of a true solution and the error in each equation is less than the tolerance value.

What if iteration is unsuccessful?

If your iteration fails to converge, it may indicate that there is no solution to the problem you are posing, or it may mean that a solution exists but the iterative equation solver was unable to find it.

The equation solver uses the current values of the input variables as a "first guess" at the solution it may be that by changing the initial values of the variables you can help the equation solver converge.

As a general rule, the closer the initial guess is to the solution, the more chance there is that the solver will converge.

Graph

This tool lets you create a graph.

When you select the **Graph** tool you are presented with a dialog box which requires you to enter a variable for the x axis, an expression for the y axis, and an initial value, final value and step size for the x axis variable.

Click on **Ok** to see the graph.

The graph facility is most useful, however, when the x-axis variable is an input to the drawing and the y-axis variable is an output.

For example, if the x-axis variable is the value of a particular dimension, and the y-axis variable is the angle between a pair of lines.

When drawing entity names (lines, points, circles, dimensions) are required in the Graph Parameters Box they may be acquired by positioning the text cursor in the appropriate entry field then selecting the entity in the main drawing.

To remove the graph from the screen, double click in its System Menu Box in the upper left corner of the graph window.

Table

You can display the values as a table by clicking on the **Table** option of the graph window's System Menu.

Table

This tool creates a table of the values of an expression for a given range of an expression.

The Table dialog box is identical to the Graph Parameter Box.

It allows you to enter an independent variable and a dependent expression. It also lets you set Initial and Final values for the independent variable and a step size.

Click on **Ok** to generate a table.

The table originally appears small and in the top left of the screen. It can be repositioned by dragging its title bar and resized by dragging the frame around the Table window.

The Scroll bar in the Table allows you to scroll through the values.

Copy

The Copy option in the Table menu copies the table values onto the Windows Clipboard. It is copied in a text format with values separated by tabs. This format allows the table to be pasted into an Excel spreadsheet. Alternatively it may be pasted into a word processor document.

Graph

Clicking on **Graph** in the Table menu allows you to turn your table into a graph.

Toolbox

This lets you turn on or off the Toolbox. While the Toolbox is turned on, this menu option is greyed.

Attributes



The **Attributes** menu contains two very important functions for communicating with the drawing.

1. The **Info** function gives you information on the currently selected entity, and lets you add more information to it, such as the velocity and tolerance of a dimension, the mass of a point, the moment of inertia of a line.
2. The **Measure** function lets you measure distances and angles (along with their tolerances) from the drawing.

There is also the **Pen** function which lets you change the style and color of the selected graphic entities, and the **Font** function lets you change the style and size of any alpha-numerics in the drawing.

For more information, see

Info

Measure

Pen

Font

Info

This function brings up the Info Box for the particular entity which is selected.

The **Attributes / Info** menu option is grayed out unless you have a single entity selected.

The Info box tells you the various parameters and properties of the selected entity, and lets you edit whichever ones are appropriate.

Keyboard Shortcut:

Press [Control] + I

Mouse Shortcut

Double clicking on an entity while in select mode will select the entity and then select the **Attributes / Info** menu option.

A shortcut to get into Select mode is to click on the right mouse button.

Info Dimension

Info Point

Info Line

Info Group

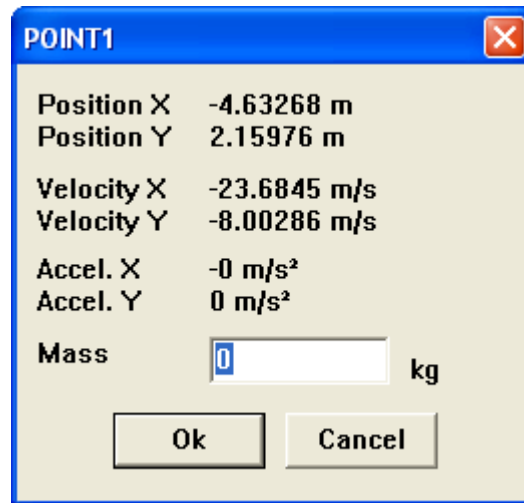
Info Dimension

The Dimension Info Box lets you edit the dimension's value, its velocity and acceleration and its tolerances.

Property	Value	Unit
Value	5	Meters
Velocity	25	m/s
Acceleration	0.	m/s ²
Tolerance	+ 1.e-003 - 1.e-003	m

Info Point

If you select a point then pick **Attributes / Info**, you will see the Points Info Box.



This tells you the position, velocity and acceleration of the point. It also lets you edit the mass of the point.

If you leave the Point Info Box on the screen while you change the value of a dimension using the Dimension Info Box, you will see the Point Info Box automatically update its value.

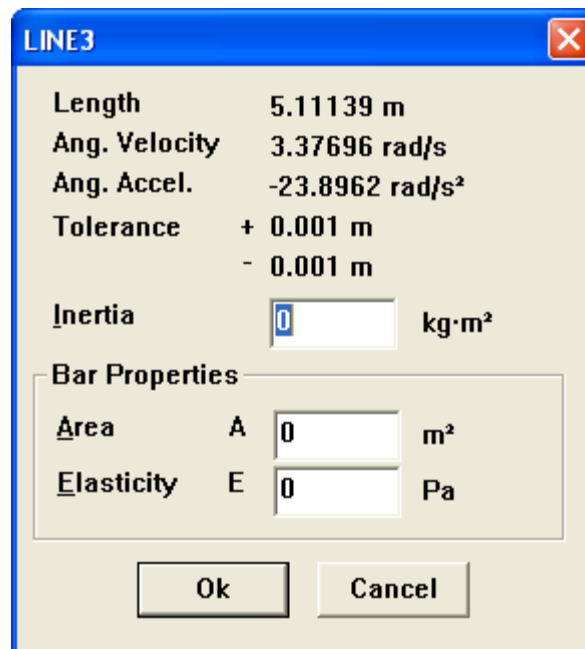
You can make the Point Info Box less wasteful of screen space by moving and resizing it.

Info Line

The Line Info Box tells you the length of a line, its angular velocity and acceleration, and tolerances on its length.

You can edit the moment of inertia of the line.

If the line represents the bar of a truss, you can define its cross sectional area (A) and its modulus of elasticity (E). (See also Defaults / Bar Properties, and Analysis / Stress)



The screenshot shows a dialog box titled "LINE3" with a close button (X) in the top right corner. The dialog contains the following fields and values:

Length	5.11139 m
Ang. Velocity	3.37696 rad/s
Ang. Accel.	-23.8962 rad/s ²
Tolerance	+ 0.001 m - 0.001 m
Inertia	<input type="text" value="0"/> kg·m ²
Bar Properties	
Area	A <input type="text" value="0"/> m ²
Elasticity	E <input type="text" value="0"/> Pa

At the bottom of the dialog are two buttons: "Ok" and "Cancel".

Info Group

Double clicking on a group while in select mode (or clicking on the group then selecting **Attributes / Info**) brings up a box which displays the area mass properties of the group.

These properties are:

Area - the area of the outer profile minus any profiles contained within. (If the profiles intersect the result is meaningless.)

I_x - Area moment about the x-axis through the centroid.

I_y - Area moment about the y-axis through the centroid.


I_z - Area moment about the z-axis through the centroid. (This is sometimes denoted J).

I_{xy} - Area product of inertia through the centroid.

I_{max}, I_{min} - Maximum and minimum area moments through the centroid.

thetamax, thetamin - the angles which the directions of maximum and minimum area moments make with the x-axis.

Xcentroid, Ycentroid - the x and y coordinates of the centroid.



A	23.162976
lx	36.621954
ly	57.707644
lz	94.329598
lxy	8.273700
lmax	60.566504
lmin	33.763094
thetaMax	19.061866
thetaMin	109.061866
Xc	-2.921636
Yc	-2.130333

OK

You create a group using the Edit / Group Selected Lines/Arcs menu option.

Measure

This function lets you measure quantities from the drawing.

You can measure:

- The distance between two points.
- The perpendicular distance between a point and a line.
- The angle between two lines.

Tolerances are given for these measurements.

The Measure box tells you whether the tolerances were measured under an assumption of absolute or statistical tolerance accumulation.

If you leave the Measure Box on screen, you can change dimension values and watch the measurement update.

To remove the Measure Box, double click on its System Menu Box in its top left corner.

Tolerance Sensitivity Analysis

Tolerance Sensitivity Analysis

Analytix adds tolerance sensitivity analysis to the tolerance analysis functionalities of Analytix.

Sensitivity analysis is performed after using the Attributes / Measure menu option to display the effective tolerance on a distance or angle from the drawing.

Sensitivity analysis is invoked by pressing the Sensitivity Button on the Measure Box.

You see the Tolerance Sensitivity display. This lists the dimensions in the figure along with the percentage contribution of each dimension to the tolerance stack up.

If you click on a particular dimension name in the tolerance sensitivity box, that dimension will be highlighted in the drawing.

If you double click on the dimension name, the Info Box for that dimension is displayed. This enables you to adjust the tolerance on the selected dimension and watch the effect of the adjustment on its contribution to the stack-up.

Pen

This option lets you change the pen used for the selected entities.

To use this function:

1. Select the entities whose pen you wish to change.
2. Choose **Attributes / Pen**.
3. Click on the new pen you wish to use.

You can also change the color, style and width of the selected pen using the sliders.

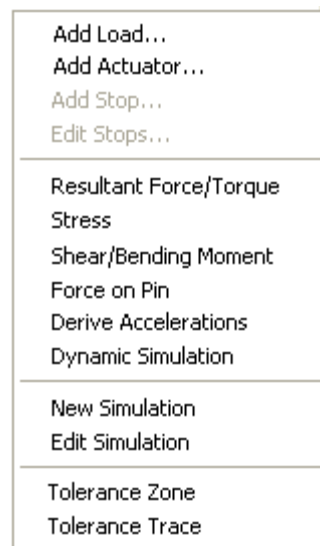
Note that changing the color, style and width of a pen will affect all the other entities which have been drawn using that pen.

Font

This option lets you change the default font.

The default font is used for all dimension symbols and for new annotations.

Analysis



The **Analysis** menu contains options to allow you to add external forces and torques and actuators to the drawing, to measure the resultant force in a dimension or on a point, to analyze stress and deflection of trusses and shear force and bending moments at some point on a line, and to report instantaneous accelerations of any point or line in a model which contains masses or applied forces. You can collect a sequence of drawing configurations as a playback simulation which can be used in many of the Tools functions.

The **Analysis** menu also has Tolerance Analysis functions which create a tolerance zone or a tolerance trace of a given point.

Add Stop and **Edit Stops** options are available only with the add-on package **Dynamix**.

For more information, see

- Add Load
- Add Actuator
- Add Stops
- Edit Stops
- Resultant Force/Torque
- Stress
- Shear/Bending Moment
- Force On Pin
- Derive Accelerations
- Dynamic Simulation
- New Simulation
- Edit Simulation
- Tolerance Zone
- Tolerance Trace

Add Load

This is the option which allows you to add an externally applied force or torque to the drawing.

The menu option is grayed out unless a point or line is selected.

Applied Force

To add an applied force to the model:

1. Select the point where the force is to be applied.
2. Pick the **Analysis / Add Load** menu option.
3. Fill in the x and y components of the force in the Load dialog box.

The applied force appears in the diagram as a small arrow pointing towards the point of application, with the force size typed at its tail.

Applied Torque

To add an externally applied torque to the model:

1. Select the line to which the torque is to be applied.
2. Pick **Analysis / Add Load** from the menu.
3. Fill in the value of the torque and its direction (Clockwise or Counter-Clockwise).

The applied torque symbol is a curved arrow applied to the center of the line. Torques may be applied to construction lines.

Applied Loads and Fixed Points and Lines

Applied forces and torques are used in performing Static and Dynamic analysis. Analytix will perform either a static equilibrium analysis of the figure or a dynamic equilibrium analysis (if there are masses defined and there is movement).

There is no constraint on the user to enter a balanced set of external forces and torques. Hence Analytix must be able to add balancing external force and torque in order that the entire drawing has zero total force.

Where does Analytix apply these extra forces?

The answer is, that a balancing force is applied to the fixed point and a balancing torque is applied to the fixed line.

This means that unless the external forces and torques which you add have a zero sum, you should make sure you set the fixed point and line appropriately for your statics or dynamics problem.

If you do not, then Analytix will apply balancing forces and torques to an arbitrary fixed point and line. This will make your results somewhat difficult to interpret.

Add Actuator

An actuator may be composed of any combination of Spring, Damper, Actuator. It may be translational or rotational.

To create a translational actuator, select its two endpoints (holding down the Shift key while selecting the second) then choose **Analysis / Add Actuator** from the menu.

To create a rotational actuator, select the two lines to which it is to be attached (holding down the Shift key while selecting the second) then choose **Analysis / Add Actuator** from the menu.

When you select **Analysis / Add Actuator**, you will see the Actuator Dialog Box. This lets you select any combination of spring, damper and black-box actuator.

Spring

If you select **Spring**, you should enter both the unextended length (free length) of the spring and the spring stiffness (spring rate). This stiffness should be in force/distance units. In SI units, this would be N/m, in fps lb/ft, in ips lb/in.

Damper

If you select **Damper**, you need to enter the damper constant (damping coefficient). This is in units of force per unit velocity. In SI it is in Ns/m, in fps it is lb.s/ft, in ips it is lb.s/in.

Black Box

A black box actuator lets you enter your own formula for a force which acts between the endpoints of the actuator. (Or, in the case of a rotational actuator a torque acting between two lines.)

A positive force in the black box actuator denotes a force tending to pull the ends of the actuator together (a tensile force). A negative force in the black box actuator denotes a force tending to push the ends of the actuator apart.

Tension & Compression

If the actuator is set to be *Tension Only*, the spring will exert force only if its length is greater than its unextended length.

If the actuator is set to be *Compression Only*, it will exert force only if its length is less than its unextended length.

If the actuator is set to be *Tension and Compression*, then it will exert a force whether its length is greater or less than its unextended length.

Uses

An actuator may be any one of the types Spring, Damper, Black Box, or it may be any combination:

- Spring & Damper
- Spring & Black Box
- Damper & Black Box
- Spring & Damper & Black Box

The Spring & Damper combination provides a useful model of a shock absorber.

A Damper alone can provide a crude linear model of friction. (A rotational damper may be used to model friction at joints). Alternatively you can use a black box actuator to enter a more sophisticated friction model.

Add Stops

Stops are used to model collisions - situations where two components of a model collide and rebound.

A simple example of such a collision would be a ball bouncing on the ground.

A stop specifies the condition that a particular point will "stop against" a particular line. If the dynamic simulation determines that the point is about to pass through the line, it will not let this happen. Instead it will model the interaction between the point and the line as an instantaneous elastic/plastic collision. The point will bounce back away from the line with a speed determined by the coefficient of restitution given when specifying the stop.

A coefficient of restitution of 1 means that the collision will be modeled as perfectly elastic, and no energy is lost in the collision. A coefficient of restitution of 0 would be a perfectly plastic collision. A coefficient of restitution between 0 and 1 would imply some loss of energy during the impact.

Note: due to the particular techniques used to integrate the dynamical equations, you shouldn't use stops to model totally plastic collisions, instead you should use bounds on a dimension.

To create a Stop you need to select the point and the line which will collide with each other.

First select the point then, holding down the Shift key select the line.

Now select **Analysis / Add Stop**.

You will see the Stop Dialog Box, which requires you to enter a coefficient of restitution. This should be a number greater than 0 and less than or equal to 1.

An alternative method of simulating collisions is to use a compression-only spring/damper combination. As the spring for such a collision would typically be very stiff, this introduces a technical condition called *stiffness* into the dynamics equations. Stiffness slows down the dynamics algorithms considerably and should be avoided if possible. Hence it is generally better to use stops rather than stiff springs.

Values for the closing velocity and for the impulse at the collision may be examined by specifying that impulses be sent to the calculator when you start the dynamic simulation.

The impulse is a measure of force times time over the duration of the collision (assumed to be short.) The closing velocity is the component of the velocity of the point

Edit Stops

The **Analysis / Edit Stops** menu option lets you change the coefficient of restitution of Stops which you have already created.

Alternatively, you can delete existing stops.

Resultant Force / Torque

The **Analysis / Resultant Force/Torque** and **Analysis / Force on Pin** options are the ways in which you ask Analytix for the results of static or dynamic analysis.

The **Analysis / Resultant Force/Torque** option is grayed out unless a dimension is currently selected.

To use **Analysis / Resultant Force/Torque**:

1. Select a dimension.
2. Pick **Analysis / Resultant Force/Torque** from the menu.

The Resultant Force/Torque dialog box will appear, which tells you (for a linear dimension) the force in the dimension or (for an angle) the torque in the dimension.

The force is either a Tension or Compression.

The model where internal forces are transmitted in dimensions may appear a little strange at first, but it is very easy to get used to and means you do not need to learn a whole new set of tools to specify how a frame or mechanism is connected up. You do this by the way you specify dimensions.

For example, if two bars come together at a welded joint which is capable of transmitting moment, then it is appropriate to enter the angle dimension between the lines. The moment transmitted by the joint is just the resultant torque in the angle dimension.

Stress

Analytix allows you to do Stress analysis and Deflection analysis on trusses. The trusses may be simple, compound or redundant. Each member of the truss, however must be a two force member. That is: the lines forming the truss must only be joined at their ends. This means that forces are all along the axis of truss members and there is no bending.

In order to do stress analysis you need first to define a cross sectional area and a modulus of elasticity for each bar in the truss. You can do this for each line individually using Attributes / Info, or you can set them all at once using Defaults / Default Bar Properties.

In contrast to the standard Analytix static model, the truss may be dimensioned in any way. In truss analysis it is the lines rather than the dimensions which are responsible for bearing the loads.

Loads may be applied to the ends of any of the lines representing truss members. Loads may not be applied to points in the middle of lines representing truss members as such loads would conflict with the requirement that the members carry only axial load.

To perform stress analysis, select the line representing the appropriate truss member, then choose **Analysis / Stress**.

You will see the Stress dialog box.

If you have not specified cross sectional areas and modulus of elasticity for sufficient lines to define a rigid structure, then an error message will appear.

Stress may also be derived using the function:

stress(*line1*)

Shear / Bending Moment

The normal Analytix static model (as opposed to the truss analysis model used for stress and deflection analysis) allows the existence of transverse forces applied to members. Analytix lets you display the shear force and bending moment at a particular point on a given line.

To use this option, first select the line whose shear force and bending moment you wish to display.

Next, while holding down the Shift key select the point on the line where you wish the shear force and bending moment. This must be either the end point of a line or an explicit point in Analytix.

Now select the **Analysis / Shear/Bending Moment** menu option.

You will see the Shear Force / Bending Moment Dialog Box.

These quantities may also be accessed using the following functions:

shear(point1,line1)

shear(line1,pont1)

moment(point1,line1)

moment(line1,point1)

Force on Pin

Use this option to derive the force transmitted through a point of the model.

The total force at a point in equilibrium is of course zero (unless the point has some external forces applied to it.)

What we need to ask for is the force applied to a given point regarded as part of some sub-component by the other components in the drawing.

To use the Force on a Pin option :

1. Select the geometric entities which make up the sub-component whose forces you wish to examine.
2. Pick **Analysis / Force on a Pin**.
3. Click on the particular point whose force you wish to examine.

Derive Accelerations

If you have a model with masses and applied forces, you can tell Analytix to free up one or more dimensions. It can then compute the instantaneous acceleration in the free dimensions caused by the applied forces.

To use this option, first ensure that appropriate masses are entered into the system. (Without masses, no acceleration will be computed.) Then select the dimensions which are free to move. Then select the **Analysis / Derive Accelerations** menu option. You will see the hourglass cursor while the accelerations are being computed then the hourglass will disappear.

If you now double click on one of the free dimensions, you will see the **Dimension** dialog box. The acceleration in this box will be the acceleration of this dimension caused by the applied forces.

If you double click on a point you will see its instantaneous acceleration due to the applied forces. If you double click on a line you will see its angular acceleration due to the applied forces.

Dynamic Simulation

To specify a dynamic simulation, you need to select the dimension or dimensions which will be free to move during the simulation. Then select **Analysis / Dynamic Simulation**.

You will see the **Dynamic Simulation** dialog box which lets you specify the time interval and accuracy of your simulation.

Time

Specify the length of time over which the dynamic simulation will run. Specify a start time, an end time and the time interval between the recorded snapshots of the motion.

In the above example, the simulation will run for 2 seconds and a snapshot of the motion will be taken every 0.1 seconds.

It should be noted that this time interval is not the time step-size used by the integration routines. The integration routines calculate their own step size based on the complexity of the behavior of the dynamic system. The integration step size can be much smaller than the interval at which snapshots are saved.

During the integration, a special variable with the name *time* is kept updated with the current simulation time. You can use this variable to give a time varying force. For example you could set:

$$f=\sin(2*\pi*time)$$

and use *f* as the *x* component of an input force. This force would then vary sinusoidally with *time* in the simulation.

In order to set the correct value for the variable *time*, you must enter a starting time and an end time for the simulation rather than just a duration.

Choosing a time interval

It is sometimes difficult to choose a sensible time interval for a specific dynamic simulation.

If you have guessed a time interval which is too long, you will find that the simulation makes very slow (or even no) progress. This is because Analytix has to do a large number of intermediate steps between each captured time step. In this situation, abort and start again with a smaller interval.

If the simulation is proceeding quickly, but the dimension values are not changing much from one interval to the next, you probably have too short a time interval. You can abort and start again with a longer interval.

It is sometimes helpful to do an initial inaccurate model just in order to determine an appropriate time interval. You make the model inaccurate and the simulation faster by setting the relative error high.

Max Iterations

The Maximum Iterations entry allows you to set a maximum for the number of integration time steps you will allow the system to perform. When the system determines it cannot perform the integration without using more than this number of steps, it will halt, giving you a warning message to that effect.

Note that the maximum iterations should be considerably greater than the number of time intervals stored. That is:

Max Iterations > (end time - start time)/time interval.

Relative Accuracy

The relative accuracy entry is the maximum allowable error in dimension values as a fraction of their values. A relative accuracy of 0.005 means that all dimension values throughout the simulation are accurate to within 0.5%.

Error is cumulative through the simulation. Hence the longer the total time interval set for the simulation, the harder it is to maintain a particular level of accuracy and the slower the system becomes.

To speed up the simulation, you can shorten the specified time interval or reduce the accuracy.

Add to Current Simulation

The **Add to Current Simulation** option lets you continue a previous simulation. The option is only available if a previous simulation exists.

When you select this option, the starting time for the simulation will be fixed to equal the ending time for the existing simulation. The time interval will be set to be the same as the interval for the previous simulation. The end time, maximum iterations and relative accuracy may all be reset.

Send Impulses to Calculator

If your model includes collisions (created by defining *Stops* between points and lines), then you can elect to send information about the collisions, if they occur, to the calculator.

The information which is sent is the value for the *impulse* and the closing velocity. For the first collision, the impulse value will be stored in the variable *impulse1*, the closing velocity in the variable *velocity1*.

Subsequent collisions will be recorded as *impulse2*, *velocity2*, *impulse3*, *velocity3*, etc. You can inspect these values in the Calculator Window by selecting **Tools/Calculator**.

The impulse is a measure of force times time and is the integral of the force exerted over the time of the collision. The time of the collision is assumed to be infinitesimally short and the forces to be infinitely large.

The closing velocity is the relative velocity of the point and the line at impact.

Simulation

During the dynamic simulation, you will see an **Abort** box. Click on the Abort button to stop the simulation. The values which have already been calculated will be saved. You can resume computation by clicking the Add to Current Simulation button of the **Dynamic Simulation** dialog box.

You can work in another window while you are performing a dynamic simulation. However, the Analytix window is inactive and so may not be reduced in size. In order to select another window, therefore, some portion must be visible before you start your simulation.

Which dimensions to use

When you create a dynamic model, most of the dimensions specify constraints which stay fixed throughout the simulation. One or more dimensions, however must be specified as free to move. There are usually a number of different ways to specify the free dimensions. The particular way you specify the free dimensions can affect the efficiency of the simulation algorithms.

For example, a single cylinder engine may be modeled with the piston displacement as the free dimension, or it may be modeled with the crank angle as the free dimension.

The piston displacement does not uniquely specify the configuration of the model, (the crank position could be up or down for any given piston displacement.) This presents a difficulty for the dynamics algorithms at the dead points at either end of the stroke.

On the other hand, using the crank angle as the free dimension in the mechanism uniquely defines it and does not give the simulation any difficulty at the dead points.

A rule of thumb for deciding which free dimensions to use is to use angles in preference to distances and to use distance between point and line in preference to distance between two points or line length.

Outputs

The **Graph**, **Table**, **Trace**, **Animate** and **Envelope** tools all have the options to **Use Current Simulation**. With this option selected, these tools output results from the latest dynamic simulation.

For example to create an animation of the last simulation, select **Tools / Animate** and press the **Use Current Simulation** button.

To graph values of some output expression over the course of the simulation, select **Tools / Graph**, press the Use Current Simulation button and enter the desired expression as the y expression.

You can use the **Analysis / Edit Simulation** menu option to select a specific time instant in the simulation to use in the drawing. You may then inspect any of the output variables at that instant, or restart the simulation from there.

New Simulation

A playback simulation lets you collect a sequence of drawing configurations, then play them back as an animation, or use the simulation in a graph or table.

It gives you more flexibility than the regular Animate, Graph and Table tools because it lets you vary more than one dimension. It also lets you vary the dimensions by irregular amounts.

To create a playback simulation, you first need to select the dimension or dimensions which will vary in the course of the simulation.

Then you need to select **Analysis / New Simulation**.

You will see the New Simulation dialog box, which lets you set the maximum number of steps which may be saved in the simulation.

When you press **Ok**, you will see the Edit Simulation Dialog Box.

To create a simulation, you first change the dimensions to match the first position of your simulation then add this configuration to the simulation.

You then go back and change the dimensions to match the second position in your simulation then add this configuration to the simulation.

You repeat this procedure till the whole simulation is built.

Edit Simulation

The **Analysis / Edit Simulation** option lets you create your own playback simulation, or inspect or edit a playback simulation created by the Dynamix add-in.

The Edit Simulation dialog box contains two list boxes. The left hand list box contains the names of the dimensions which vary in the simulation and their derivatives.

The right hand list box contains the values for the quantity highlighted in the left hand list box throughout the simulation. You use this list box to select a time step of the simulation. You may then Insert a step before it, Delete that time step or Use that time step in your drawing.

Add

The Add button allows you to add a step to the end of the current simulation. When you press Add, Analytix will record from the drawing the current values of all the dimensions in the left hand list box and their derivatives. It will add this configuration to the end of the simulation.

Delete

The Delete button will remove from the simulation the time step highlighted in the right hand dialog box.

For example, to remove time step 3, highlight time 3 in the right hand dialog box (it does not matter which dimension is displayed). Then press the Delete button.

Insert

The Insert button allows you to insert a step before the currently selected time step in the simulation. When you press Insert, Analytix will record from the drawing the current values of all the dimensions in the left hand list box and their derivatives. It will insert this configuration into the simulation before the time step currently selected in the right hand list box.

Use

When you press the Use button, Analytix will take the dimension values, velocities and accelerations from the simulation for that time step and substitute them into the drawing.

This option lets you go to any specific time step in the simulation and interactively make measurements from the drawing.

Tolerance Zone

This analysis option draws the region within which the selected point must lie given the existing tolerances on the drawing's dimensions.

Tolerances on distances and angles are displayed using the Attributes / Measure function.

To create a tolerance zone:

1. Enter tolerances for the dimensions in the drawing as appropriate.
2. Make sure that an appropriate point and line are fixed.
3. Select the point whose tolerance zone you wish to display
4. Pick **Analysis / Tolerance Zone**.

Tolerance analysis can be quite time consuming; so there may be a reasonable lag, then the tolerance zone will be drawn.

If the tolerances are realistically tight, this zone will probably be too small to see with the naked eye and you will have to zoom in to find it.

A technique which is sometimes useful is to scale the size of the tolerances up by an order of magnitude or two, then you will be able to see both the overall drawing and a scaled up version of the tolerance zone.

It is important to make sure you have fixed a point and line when performing tolerance zone analysis, as there has to be a fixed reference with respect to which to measure the variation of the selected point.

Max / Min Tolerance Zone

If the current tolerance mode is **Max/Min Tolerance**, then the tolerance zone is a polygon. This polygon is the locus of all the positions attainable by the point for within-tolerance values of the dimension.

Statistical Tolerance Zone

The Statistical Tolerance Zone is an ellipse.

There are several different ways of describing this ellipse. The most succinct is its mathematical definition: it is an equiprobable ellipse of the Bivariate Normal Distribution which describes, statistically, the position of the point.

This gives you the shape of the region where the point will lie "most of the time". The definition of what is meant by "most of the time" depends on the statistical interpretation of the tolerances which were given for the dimensions.

When you use the **Statistical Tolerancing** mode, Analytix interprets the upper and lower tolerances as being fixed percentiles of a Normal Distribution. For example you might regard the input tolerances to be 99.9% percentiles - i.e. failure to meet tolerance on a given dimension will occur only 0.1% of the time. In this case the ellipse shows a region inside which the point will lie 99.9% of the time.

If you interpret the input tolerances to be 95% percentiles, then the output tolerance zone must be interpreted as the region inside which the point will lie 95% of the time.

Erasing Tolerance Zones

Tolerance zones are drawn on the Background level. You erase them using the Edit / Erase

Background menu option.

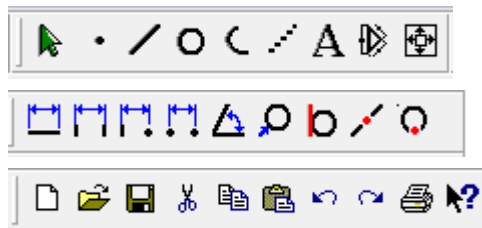
Tolerance Trace

The **Tools / Tolerance Trace** option lets you look at the tolerance on an entire coupler curve.

Instead of a single curve, the tolerance trace gives two curves which represent the boundaries of the region where the trace point may lie throughout the motion.

This region will be either statistical or absolute depending on which default tolerance flags are set.

Toolbar Help



Select - Select entities in the drawing



Point - Create a point



Line - Create a line



Circle - Create a circle



Arc - Create an arc



Construction Line - Create a construction line



Line Length - This dimension lets you specify the length of a line.



Parallel Distance - This dimension lets you specify that two lines are parallel.



Line to Point - This dimension lets you specify the perpendicular distance between a line and a point.



Point to Point - This dimension lets you specify the distance between two points.



Angle - This dimension lets you specify the angle between two lines.



Radius - - This dimension lets you specify the radius of an arc or circle.



Tangent - This lets you specify that a circle or arc is tangent to a line or to another circle or arc.



Point on Line - This lets you specify that a given point lies on a given line.



Point on Circle - This lets you specify that a given point lies on a given circle.



New - Creates a new file with no name and no contents. Erases the current drawing.



Open - This menu option allows you to open a previously saved Analytix file.



Save - This menu option saves the current drawing in a file.



Cut - This option Cuts the currently selected entities and any dependent entities from the drawing



Copy - This option copies all currently selected entities to the clipboard.



Paste - This option allows you to Paste that drawing on the clipboard onto your current drawing.



Undo - Reverses actions starting with the last one.



Redo - Reinstates actions that you have undone.



Print - Brings up the standard system Print dialog box so you can choose a printer and print options.



Help - Invokes the embedded Help facility.

Index

- A -

- Add Actuator 61
- Add Load 60
- Add Stops 62
- Analysis Menu
 - Add Actuator 59
 - Add Load 59
 - Add Stops 59
 - Derive Accelerations 59
 - Dynamic Simulation 59
 - Edit Stops 59
 - Force on Pin 59
 - New Simulation 59
 - Resultant Force / Torque 59
 - Shear / Bending Moment 59
 - Stress 59
 - Tolerance Trace 59
 - Tolerance Zone 59
- Angle 25
- Animate 41
- Annotation 21
- Annotations 15
- Arc 20
- Attributes Menu
 - Info 54
 - Info Dimension 54
 - Info Group 54
 - Info Line 54
 - Info Point 54
 - Measure 54
 - Pen 54
 - Point 54
 - Tolerance Sensitivity Analysis 54
- Automatic 26

- B -

- Bar Properties 37
- Blank 32

- Blank / Unblank Level 32

- C -

- Calculator
 - Expressions 42
 - Functions 42
- Change Level 32
- Circle 21
- Constrain Menu
 - Fix Point / Line 27
 - Horizontal 27
 - Same Line 27
 - Same Point 27
 - Vertical 27
- Construction Line 21
- Copy 15
- Cut 15

- D -

- Default Tolerance 38
- Defaults Menu
 - Default Bar Properties 33
 - Default Tolerance 33
 - Defaults Pen 33
 - Dynamics Defaults 33
 - Max / Min Tolerance 33
 - Pick Aperture 33
 - Statistical Tolerance 33
 - System Defaults 33
- Defaults Pen 33
- Derive Accelerations 65
- Dimension Menu
 - Angle 23
 - Automatic 23
 - Line Length 23
 - Line to Point 23
 - Parallel Distance 23
 - Point on Circle 23
 - Point on Line 23
 - Point to Point 23
 - Radius 23
 - Tangent 23

Dimensions 14
 DXF In 11
 DXF Out 11
 Dynamic Simulation 65
 Dynamics Defaults 39

- E -

Edit Links 17
 Edit Menu
 Annotations 12
 Copy 12
 Cut 12
 Dimensions 12
 Edit Links 12
 Erase Background 12
 Export Link 12
 Force Elements 12
 Geometry 12
 Group 12
 Import Link 12
 Paste 12
 Select 12
 Select All 12
 Snap 12
 Undo 12
 Ungroup 12
 Edit Simulation 69
 Edit Stops 63
 Envelope 42
 Erase Background 18
 Export Link 17
 Expressions 43

- F -

File Menu
 DXF In 8
 DXF Out 8
 New 8
 Open 8
 Plot 8
 Save 8
 Save As 8

Fillet 20
 Fix Point / Line 28
 Font 59
 Force Elements 15
 Force on Pin 65
 Function - Alphabetical 46
 Functions 44

- G -

Geometry 14
 Graph 53
 Group 18

- H -

Horizontal 29

- I -

Import Link 16
 Increment 41
 Info 55
 Info Dimension 55
 Info Group 57
 Info Line 56
 Info Point 55

- L -

Line 20
 Line Length 24
 Line to Point 24

- M -

Max / Min Tolerance 37
 Measure
 Tolerance Sensitivity Analysis 58
 Menu Index 7
 Move 30
 Multivariate Iteration 50

- N -

New 9
New Simulation 68

- O -

Open 9

- P -

Parallel Distance 24
Paste 15
Pen 59
Pick Aperture 35
Plot 10
Point 20
Point on Circle 26
Point to Point 25

- R -

Radius 26
Resultant Force / Torque 63
Rotate 31

- S -

Same Line 27
Same Point 28
Save 10
Save As 10
Select 14
Select All
 Annotations 14
 Dimensions 14
 Force Elements 14
 Geometry 14
Shear / Bending Moment 64
Sketch Menu
 Annotation 19
 Arc 19

Circle 19
Construction Line 19
Fillet 19
Line 19
Point 19
Statistical Tolerance 38
Stress 64
System Defaults 35

- T -

Table 53
Tangent 26
Tolerance Sensitivity Analysis 58
Tolerance Trace 71
Tolerance Zone 69
Toolbar 71
Toolbox 54
Tools Menu
 Animate 40
 Calculator 40
 Envelope 40
 Expressions 40
 Functions 40
 Graph 40
 Increment 40
 Multivariate Iteration 40
 Table 40
 Toolbox 40
 Trace 40
 Univariate Iteration 40
Trace 42

- U -

Unblank All 32
Undo 13
Ungroup 19
Univariate Iteration 49

- V -

Vertical 29
View Menu

View Menu

Blank	30
Blank / Unblank Level	30
Change Level	30
Move	30
Rotate	30
Unblank All	30
Zoom Box	30
Zoom Min / Max	30
Zoom Out	30

- Z -

Zoom Box	31
Zoom Min / Max	32
Zoom Out	32